

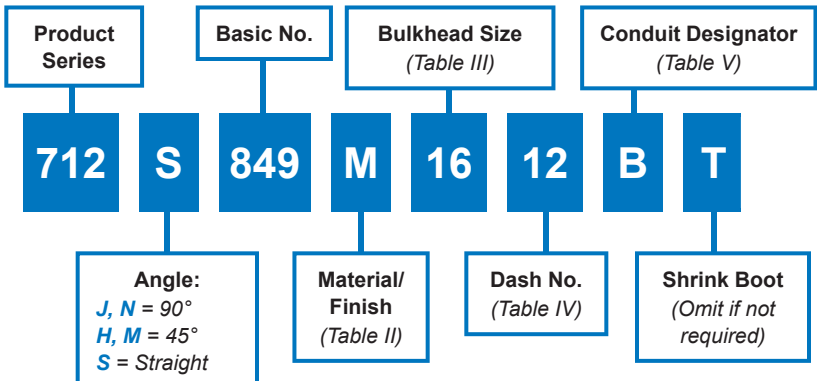


712-849
RP Plus System
Low-Profile Bulkhead Fitting with Shrink Boot Accomodation
for Series 75 Metal-Core Conduit

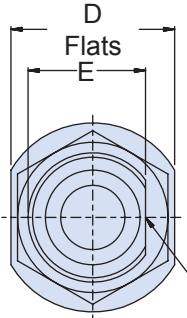
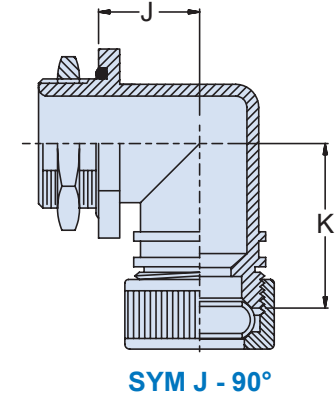
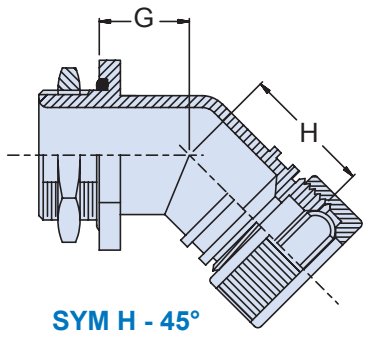
RP Plus conduit-to-bulkhead fitting, environmental



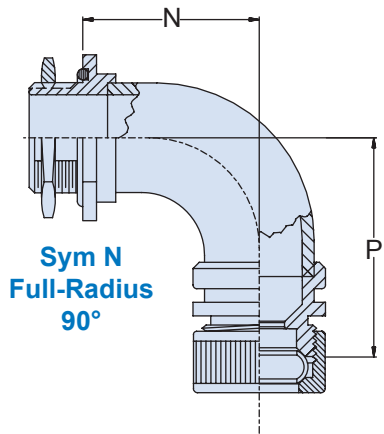
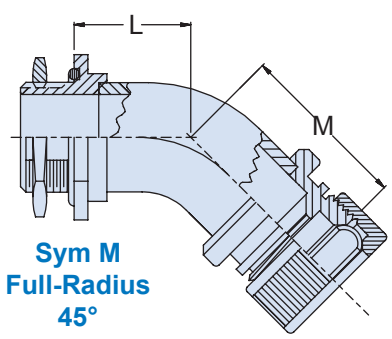
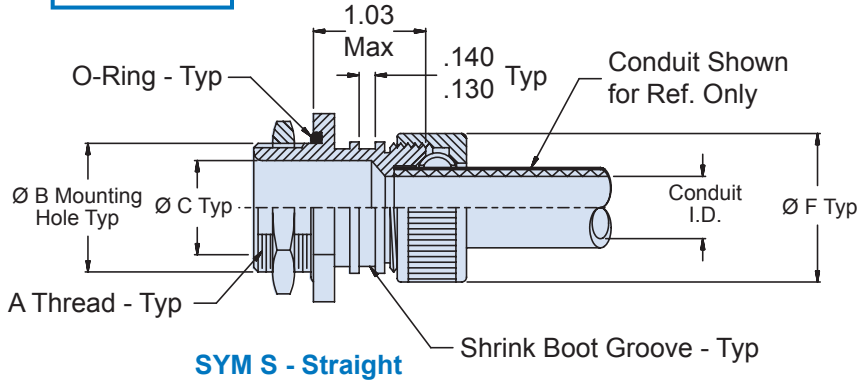
How To Order



D



Flat for 'D' Hole Mounting
(See P/N Development)



Material and Finish

- Adapters, Elbows, Nuts & Rings: See Table II
- O-Ring: Silicone/NA

Notes

- Mates with conduit per Table V

712-849
RP Plus System
Low-Profile Bulkhead Fitting with Shrink Boot Accomodation
for Series 75 Metal-Core Conduit



Series 75
Metal-Core Conduit

Table III: Bulkhead Size

Bulkhead Size	A Thread Class 2A	B Dia +.015 -.000	C Dia	Max Dash No Table IV	D Flats	E +.000 -.015	G Max	J Max
08	1/2-20 UNF	0.505 (12.8)	0.250 (6.4)	08	0.750 (19.1)	0.438 (11.1)	0.53 (13.5)	0.70 (17.8)
12	5/8-24 UNEF	0.630 (16.0)	0.375 (9.5)	12	0.875 (22.2)	0.563 (14.3)	0.56 (14.2)	0.77 (19.6)
16	3/4-20 UNEF	0.755 (19.2)	0.500 (12.7)	16	1.000 (25.4)	0.688 (17.5)	0.58 (14.7)	0.84 (21.3)
20	7/8-20 UNEF	0.880 (22.4)	0.625 (15.9)	20	1.125 (28.6)	0.812 (20.6)	0.61 (15.5)	0.91 (23.1)
24	1-20 UNEF	1.005 (25.5)	0.750 (19.1)	24	1.250 (31.8)	0.938 (23.8)	0.64 (16.3)	0.98 (24.9)
32	1 5/16-18 UNEF	1.318 (33.5)	1.000 (25.4)	32	1.562 (39.7)	1.250 (31.8)	0.71 (18.0)	1.16 (29.5)
40	1 1/2-18 UNEF	1.505 (38.2)	1.250 (31.8)	40	1.812 (46.0)	1.438 (36.5)	0.77 (19.6)	1.30 (33.0)
48	1 3/4-18 UNS	1.755 (44.6)	1.500 (38.1)	48	2.062 (52.4)	1.688 (42.9)	0.83 (21.1)	1.44 (36.6)
64	2 1/4-16 UN	2.255 (57.3)	2.000 (50.8)	64	2.562 (65.1)	2.188 (55.6)	0.97 (24.6)	1.71 (43.4)

Table IV: Dash No./Shrink Boot

Dash No	Conduit I.D.	F Dia Max	H Max	K Max	L Max	M Max	N Max	P Max	Shrink Boot Part Number
08	0.250 (6.4)	0.84 (21.3)	1.06 (26.9)	1.26 (32.0)	0.50 (12.7)	1.01 (25.7)	0.68 (17.3)	1.20 (30.5)	770-001S104
12	0.375 (9.5)	0.97 (24.6)	1.09 (27.7)	1.32 (33.5)	0.53 (13.5)	1.04 (26.4)	0.75 (19.1)	1.26 (32.0)	770-001S105
16	0.500 (12.7)	1.09 (27.7)	1.12 (28.4)	1.38 (35.1)	0.55 (14.0)	1.07 (27.2)	0.81 (20.6)	1.32 (33.5)	770-001S106
20	0.625 (15.9)	1.22 (31.0)	1.14 (29.0)	1.44 (36.6)	0.61 (15.5)	1.12 (28.4)	0.93 (23.6)	1.45 (36.8)	770-001S106
24	0.750 (19.1)	1.35 (34.3)	1.17 (29.7)	1.51 (38.4)	0.63 (16.0)	1.14 (29.0)	1.00 (25.4)	1.51 (38.4)	770-001S107
32	1.000 (25.4)	1.66 (42.2)	1.23 (31.2)	1.66 (42.2)	0.71 (18.0)	1.22 (31.0)	1.18 (30.0)	1.70 (43.2)	770-001S108
40	1.250 (31.8)	1.91 (48.5)	1.28 (32.5)	1.79 (45.5)	0.76 (19.3)	1.27 (32.3)	1.31 (33.3)	1.82 (46.2)	770-001S108
48	1.500 (38.1)	2.28 (57.9)	1.36 (34.5)	1.98 (50.3)	0.81 (20.6)	1.32 (33.5)	1.43 (36.3)	1.95 (49.5)	770-001S109
64	2.000 (50.8)	2.78 (70.6)	1.50 (38.1)	2.23 (56.6)	TBD (TBD)	TBD (TBD)	TBD (TBD)	TBD (TBD)	770-001S109

D

Table II: Material and Finish

Sym	Material	Finish Description
NF	Al Alloy	Cad O.D. Over Electroless Nickel (1000 Hour Salt Spray)
BN	Brass	
B0	Brass	Unplated
Z1	300 Series SST	Passivate
M	Al Alloy	Electroless Nickel
MT	Al Alloy	Nickel PTFE
SN	Steel, B1113	Cad O.D. Over Electroless Nickel (1000 Hour Salt Spray)
ZM	300 Series SST	Electroless Nickel
ZW	300 Series SST	Cadmium Olive Drab over Electroless Nickel

Table V: Conduit Designator

Conduit Part Number	Core Material	Conduit Designator
750-191 & -192 (Core Option N) 750-084, 750-085	Nickel/Iron Core	N
750-191 & -192 (Core Option C) 750-094, 750-095	Stainless Steel Core	
M24758-*, 750-079	M24758 Brass Core	
750-191 & -192 (Core Option B) 730-031, 750-045	Glenair Brass Core	B
750-190 (Core Option N)	Nickel/Iron Core	W
750-190 (Core Option C)	Stainless Steel Core	
750-190 (Core Option B)	Glenair Brass Core	X
750-193 & -194 (Core Option N)	Nickel/Iron Core	Y
750-193 & -194 (Core Option C)	Stainless Steel Core	
750-193 & -194 (Core Option B)	Glenair Brass Core	