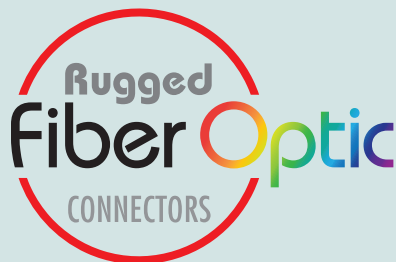


GLENAIR  
SIGNATURE  
FIBER OPTIC  
CONNECTION  
SYSTEMS



# Rugged High-Density MT Ferrule Fiber Optic Connection System— With Mil-Grade Miniature Series 79 Packaging



Glenair is qualified by US Conec to terminate 1 and 2 row PRIZM® MT and MXC® Ferrules for ribbon and round cable fiber.

Single-ferrule high-density  
MT datalinks in Glenair  
Signature Series  
79 rectangular  
packaging  
optimize SWaP in  
mission-critical  
mil-aero  
applications



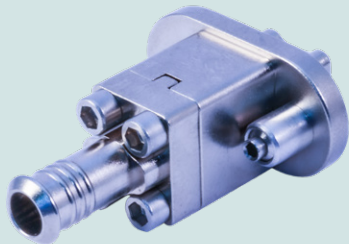
Connector series supports both ribbon and round cable, as well as standard and expanded-beam MT ferrules

- Small form-factor, high-density fiber optic solution for rugged mil-aero applications
- Temperature tolerance from -40°C to +85°C
- Optimized for use with parallel optical transceivers in ribbon or round cable applications
- Designed for optimal low insertion loss performance in high vibration and shock environments



# ULTRA HIGH-DENSITY Rugged MT Fiber Optic Connectors

## Signature fiber optic connection system: miniature Series 79 packaging



-06 plug, with retaining plate for EMI shield termination and strain relief of ribbon or round fiber cable



-S7 receptacle with standard retaining plate



-S7 receptacle with conductive EMI gasket

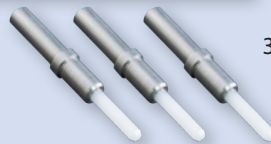
### ABOUT SERIES 79 MT FIBER OPTIC CONNECTORS

Designed in accordance with rugged mil-aero industry specifications, the Glenair Series 79 MT fiber optic connector is the world's smallest ruggedized MT connector solution. High-density MT ferrules are packaged in precision-machined rectangular aluminum shells with electroless nickel finish, or passivated stainless steel shells for higher temperature applications. Receptacles may be equipped with optional EMI gaskets, and mate bottom-to-bottom with plug assemblies for robust resistance to vibration and shock. Designed for harsh-environment, inside-the-box use in parallel optics, fiber optic backplanes, missile systems, spacecraft and satellites, heads-up displays, and other ribbonized or flex-circuit fiber optic datalinks, the Series 79 MT delivers superior low insertion-loss performance (up to 500 mating cycles). Connectors are supplied in single (consult factory for dual and quad) MT configurations with banding platform or ultra low-profile retaining plate options.

#### The MT Ferrule High-Density Advantage



24 fibers



3 fibers

Up to 24 fibers in a single compact, lightweight ferrule (7mm x 3mm / .276" x .118") —same real estate as three size #16 termini side by side

### PARALLEL OPTICAL TRANSCEIVERS



Glenair's rugged, small form-factor parallel optical transceivers are the ideal solution for board-level optical-to-electrical conversion utilizing MT fiber optic ferrules.

#### Series 79 MT Ferrule Fiber Optic Connector Performance Specifications per QTP-773 and Test Report GT-19-111

Test Description	Test Results
Optical Insertion Loss, multimode (consult factory for singlemode)	50/125 μm fiber @ 850 nm: ≤0.15 dB average; 0.31 dB typical 50/125 μm fiber @ 1300 nm: ≤0.21 dB average; 0.38 dB typical
Temperature Cycling: per TIA/EIA-455-3, Test Condition C-2	- 40°C to +85°C, 5 Cycles, 56 hours Max. CIT = .25 dB; Max. IL post-test = .30 dB
Mating Durability	First 100 cycles with CIT measured every 10 cycles Max. CIT = 0.12 dB; Max. IL post-test = 0.20 dB (Mating hardware torqued to spec when taking IL measurements)
Mating Durability, Extended	From 101st cycle to 500th cycle with CIT measured every 25 cycles Max. CIT = 0.21 dB; Max. IL post-test = 0.30 dB (Mating hardware torqued to spec when taking IL measurements)
Physical Shock 1: 50g Peak, 11 ms duration, per TIA/EIA-455-14, Test Condition E	Max. CIT = 0.14 dB; Max. IL post-test = 0.42 dB; discontinuity ≤0.5 dB @ <1 us.
Physical Shock 2: 160g Peak, 4 ms duration, per MIL-STD-202, Method 213	Max. CIT = 0.04 dB; Max. IL post-test = 0.40 dB; discontinuity ≤0.5 dB @ <1 us.
Additional Physical Shock: 300g Peak, 0.5 ms duration, per MIL-STD-883E, Method 2002.4 (30 shocks total)	Max. CIT = .15 dB; Max. IL post-test = 0.20 dB; discontinuity ≤0.5 dB @ <1 us.
Vibration 1: 5-15 Hz, .12" double amplitude, 2 hours/axis (6 hours total) per MIL-STD-202, test condition 201, Sinusoidal	Max. CIT = 0.06 dB; Max. IL post-test = 0.37 dB
Vibration 2 : 20g Peak, 10-2,000 Hz, 4 hours/axis (12 hours total) per TIA-455-11, Test Condition IV, Sinusoidal	Max. CIT = 0.08 dB; Max. IL post-test = 0.43 dB
Weight	Plug with Ferrule kit 5.5 grams · Receptacle with Ferrule kit 7.5 grams

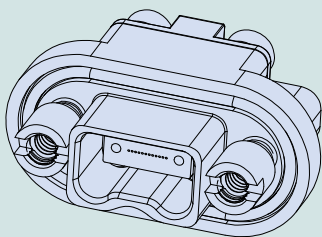
# SERIES 79 MINIATURE MT Fiber Optic Connectors

## 183-003 Standard Series 79 MT How To Order

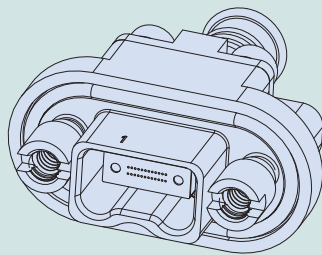
Glenair is qualified by US  
Conec to terminate 1 and  
2 row PRIZM® MT and  
MXC® Ferrules for ribbon  
and round cable fiber.



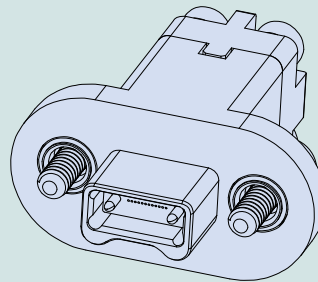
How To Order	
<b>Sample Part Number</b>	183-003 ME -06 -L -1 A -APC
<b>Basic Number</b>	Series 79 Single MT Fiber Optic Connector
<b>Material / Finish</b>	ME = Al Alloy / Electroless Nickel MT = Al Alloy / Nickel PTFE ZR = Al Alloy / Zinc Nickel, Black NF = Al Alloy / Cadmium, O.D. Z1 = Stainless Steel / Passivate
<b>Connector Type</b>	-06 = Plug (used with male MT ferrule) -07 = Receptacle (used with female MT ferrule) -S7 = Receptacle with EMI gasket (used with female MT ferrule)
<b>Mounting Hardware</b>	Hardware for PLUGS Rear Panel Mount Jackposts for RECEPTACLES: -L = Hex Head Jackscrew, non-removable -X = for .031" panel thickness -K = Slotted Head Jackscrew, non-removable -W = for .047" panel thickness -B = Thru-Hole -V = for .062" panel thickness -T = for .094" panel thickness -R = for .080" panel thickness
<b>Retaining Plate / Banding Platform</b>	-1 = 12 or 24 channel without banding platform -2 = 12 or 24 channel with banding platform for EMI shield termination and strain relief N = No Retaining Plate (For use with standalone retaining plate) See Dwg. 189-168 for various retaining plate designs See Dwg. 189-177 for retaining plate used with Prizm-MT on Jacketed Cable
<b>Polarization Key Position</b>	A or B position for Plug; A, B, or U position for Receptacle Omit for no Polarization Key. See Table.
<b>APC / Flat MT option</b>	-APC = for use with angled MT Ferrule (MT/APC) Omit = for use with flat MT ferrule (MT/PC) including Prizm-MT



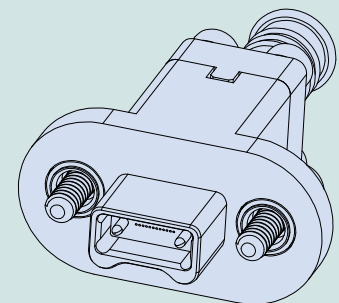
Receptacle with female MT ferrule, available with or without EMI gasket



Receptacle with female MT ferrule, retaining plate, and banding platform



Plug with male MT ferrule and retaining plate



Plug with male MT ferrule with retaining plate and banding platform

### MATERIAL/FINISH/NOTES

Mounting hardware: stainless steel / passivated

EMI gasket (optional): conductive silicone

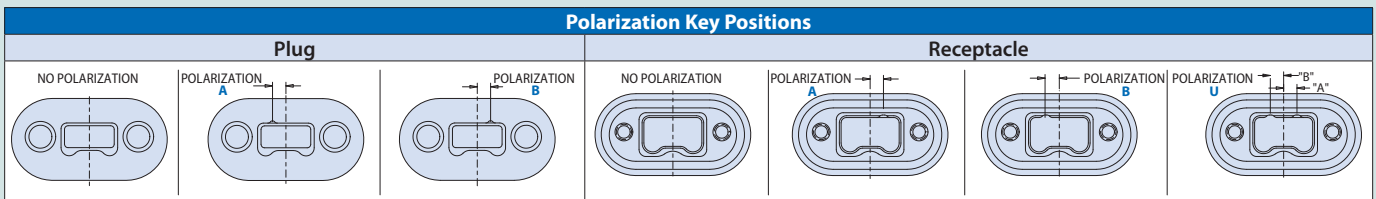
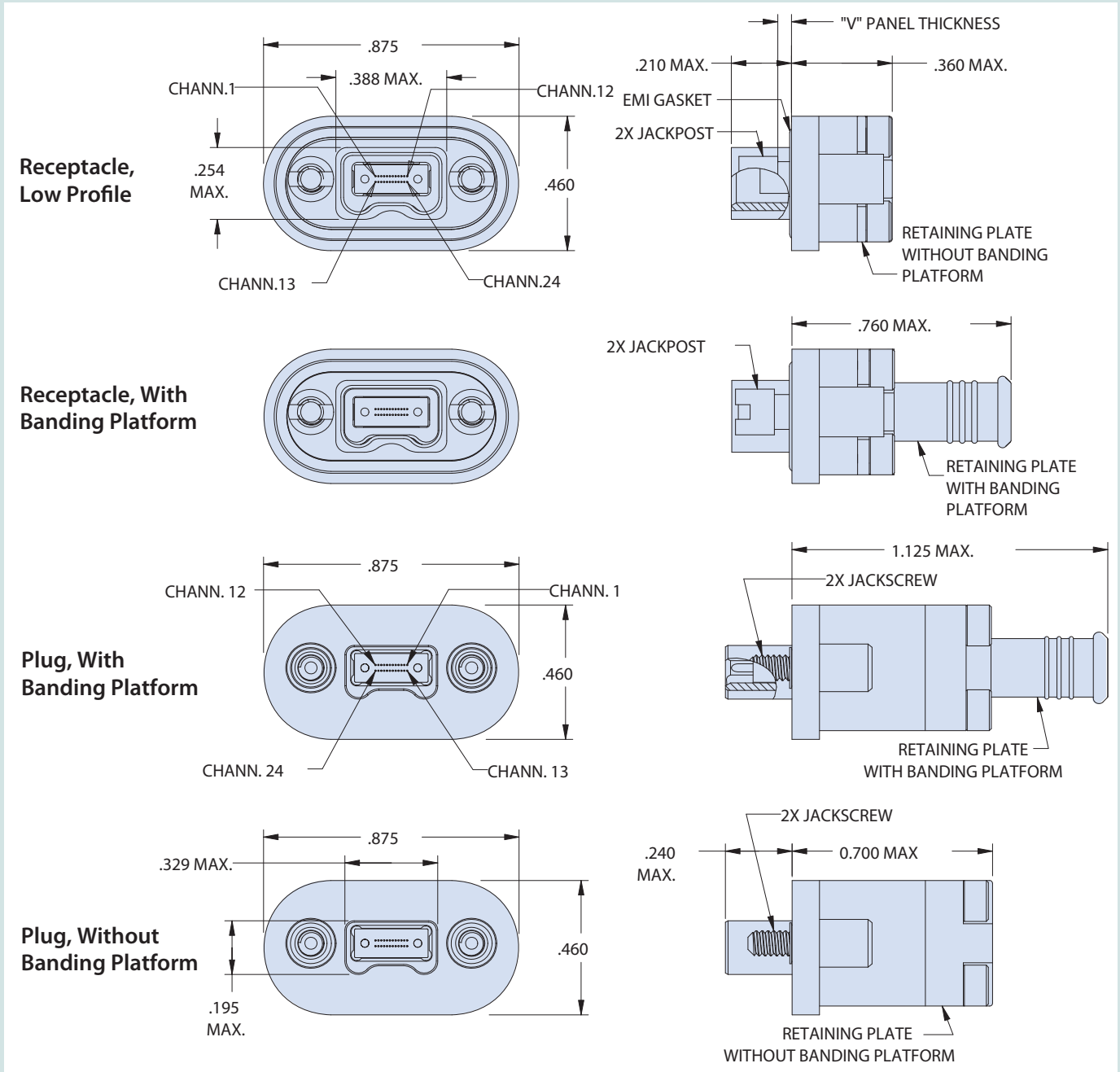
Additional materials, finishes, connector configurations (dual and quad layouts), and hardware options are available, consult factory

# SERIES 79 MINIATURE MT Fiber Optic Connectors

## 183-003 Standard Series 79 MT Connector styles and dimensions



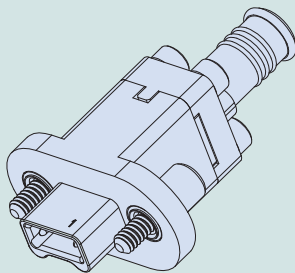
Glenair is qualified by US Conec to terminate 1 and 2 row PRIZM® MT and MXC® Ferrules for ribbon and round cable fiber.



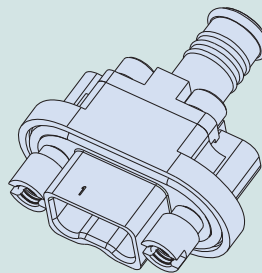
# SERIES 79 MINIATURE MT Fiber Optic Connectors

## 183-014 Environmental Series 79 MT How To Order

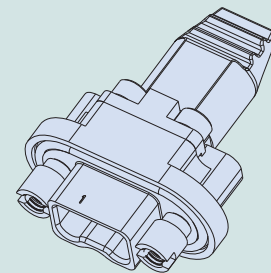
How To Order	
<b>Sample Part Number</b>	<b>183-014</b> <b>ME</b> <b>-06</b> <b>-L</b> <b>-2</b> <b>A</b> <b>-APC</b>
<b>Basic Number</b>	Series 79 Single MT Environmental Fiber Optic Connector
<b>Material / Finish</b>	<b>ME</b> = Al Alloy / Electroless Nickel <b>MT</b> = Al Alloy / Nickel PTFE <b>ZR</b> = Al Alloy / Zinc Nickel, Black <b>NF</b> = Al Alloy / Cadmium, O.D. <b>Z1</b> = Stainless Steel / Passivate
<b>Connector Type</b>	<b>-06</b> = Plug (used with male MT ferrule) <b>-07</b> = Receptacle (used with female MT ferrule) <b>-09</b> = Receptacle with EPDM O-ring (used with female MT ferrule)
<b>Mounting Hardware</b>	Hardware for PLUGS <b>-L</b> = Hex Head Jackscrew, non-removable <b>-K</b> = Slotted Head Jackscrew, non-removable <b>-B</b> = Thru-Hole Rear Panel Mount Jackposts for RECEPTACLES: <b>-X</b> = for .031" panel thickness <b>-W</b> = for .047" panel thickness <b>-V</b> = for .062" panel thickness <b>-T</b> = for .094" panel thickness <b>-R</b> = for .080" panel thickness (panel thickness dims ±.002")
<b>Retaining Plate / Banding Platform</b>	<b>-2</b> = 12 or 24 channel for plug or receptacle with banding porch <b>-3</b> = 12 channel for receptacle without banding porch only (N/A for plug) <b>-4</b> = 24 Channel for receptacle without banding porch only (N/A for plug) <b>-N</b> = No Retaining Plate (For use with standalone retaining plate) See Dwg. 189-165 for various retaining plate designs See Dwg. 189-178 for retaining plate used with Prizm-MT on Jacketed Cable
<b>Polarization Key Position</b>	<b>A</b> or <b>B</b> position for Plug; <b>A</b> , <b>B</b> , or <b>U</b> position for Receptacle <b>Omit</b> for no Polarization Key. See Table.
<b>APC / Flat MT option</b>	<b>-APC</b> = for use with angled MT Ferrule (MT/APC) <b>Omit</b> = for use with flat MT ferrule (MT/PC) including Prizm-MT



Plug  
with Banding Porch



Receptacle  
with Banding Porch



Receptacle  
without Banding Porch

Additional Components
<b>181-133</b> or <b>181-150</b> MT Ferrule Kit
<b>601-500</b> or <b>601-501</b> Band-Master ATS® Nano Band for shield termination
<b>189-160</b> Dust Cap

Seal Materials			
Connector Type	Panel O-Ring	Peripheral Seal	Rear Gasket
<b>-06</b> Plug	N/A	N/A	Fluorosilicone
<b>-07</b> Receptacle	Fluorosilicone	Fluorosilicone	Fluorosilicone
<b>-09</b> Receptacle	EPDM	Fluorosilicone	Fluorosilicone

### MATERIAL/FINISH/NOTES

Mounting hardware: stainless steel / passivated

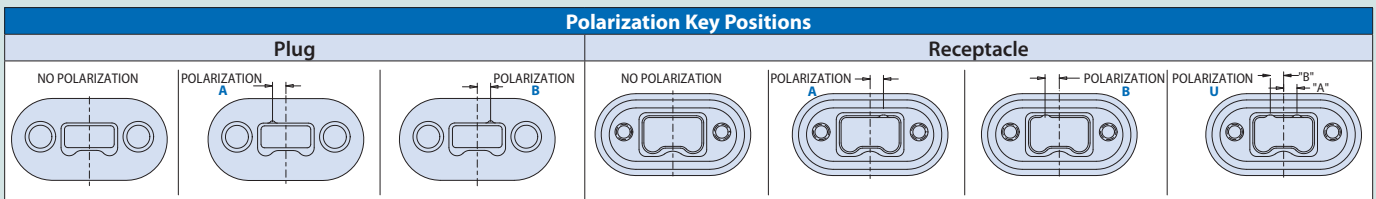
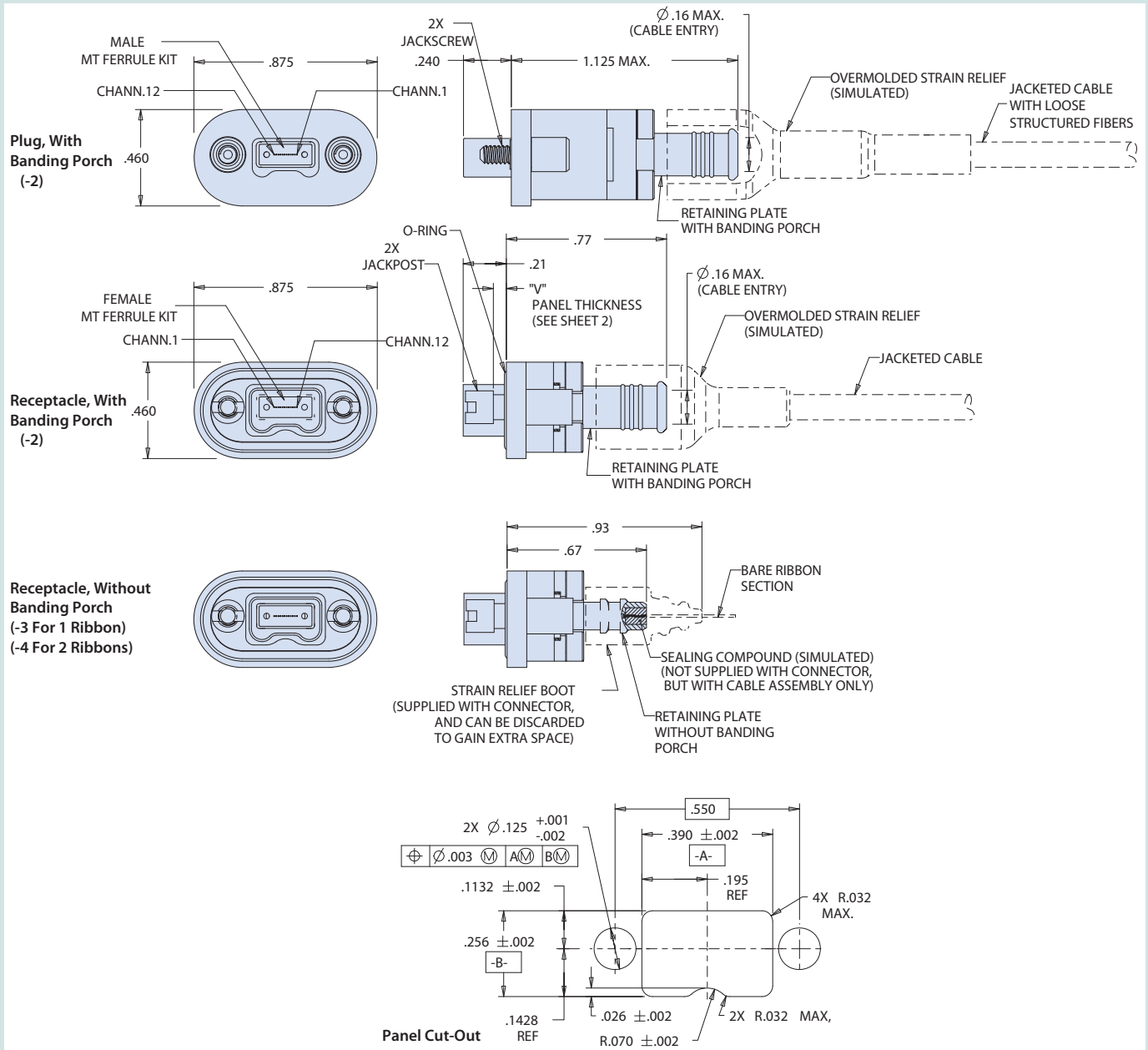
Additional materials, finishes, connector configurations (dual and quad layouts), and hardware options are available, consult factory

Connectors supplied without MT ferrule kit, purchase separately per P/N 181-133 or 181-150

# SERIES 79 MINIATURE MT Fiber Optic Connectors



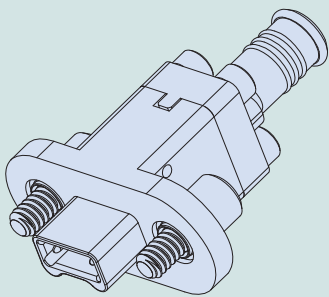
## 183-014 Environmental Series 79 MT Connector styles and dimensions



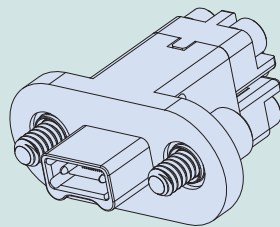
# SERIES 79 MINIATURE MT Fiber Optic Connectors

## 183-021 Series 79 MT with expanded polarized keying positions and #4-40 UNC jackscrew · How To Order

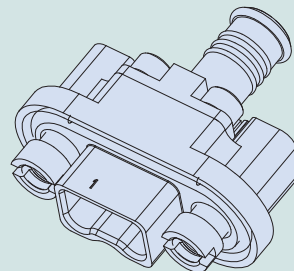
How To Order	
<b>Sample Part Number</b>	183-021 ME -06 -L -1 -A13 -APC
<b>Basic Number</b>	Series 79 Single MT Fiber Optic Connector
<b>Material / Finish</b>	ME = Al Alloy / Electroless Nickel MT = Al Alloy / Nickel PTFE ZR = Al Alloy / Zinc Nickel, Black NF = Al Alloy / Cadmium, O.D. Z1 = Stainless Steel / Passivate
<b>Connector Type</b>	-06 = Plug (used with male MT ferrule) -07 = Receptacle (used with female MT ferrule) -S7 = Receptacle with EMI O-ring (used with female MT ferrule)
<b>Mounting Hardware</b>	Hardware for PLUGS -L = Hex Head Jackscrew, non-removable -B = Thru-Hole Rear Panel Mount Jackposts for RECEPTACLES: -X = for .031" panel thickness -W = for .047" panel thickness -V = for .062" panel thickness -T = for .094" panel thickness -R = for .080" panel thickness (panel thickness dims ±.002")
<b>Retaining Plate / Banding Platform</b>	-1 = 12 or 24 channel without banding porch -2 = 12 or 24 channel with banding porch -N = No Retaining Plate (For use with standalone retaining plate) See Dwg. 189-168 for various retaining plate designs See Dwg. 189-177 for retaining plate used with Prizm-MT on Jacketed Cable
<b>Polarization Key Position</b>	See POLARIZED KEYING POSITIONS Table -U = Universal position for Receptacle only Omit for no Polarization Key. See Table.
<b>APC / Flat MT option</b>	-APC = for use with angled MT Ferrule (MT/APC) Omit = for use with flat MT ferrule (MT/PC) including Prizm-MT



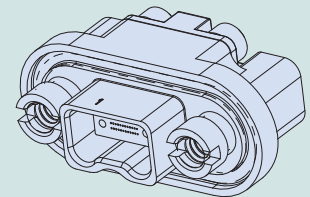
Plug  
with Banding Porch



Plug  
without Banding Porch



Receptacle  
with Banding Porch



Receptacle  
without Banding Porch

Additional Components
181-133 or 181-150 MT Ferrule Kit
601-500 or 601-501 Band-Master ATS® Nano Band for shield termination
189-172 Dust Cap
189-168 or 189-177 Various Retaining Plate Designs

### MATERIAL/FINISH/NOTES

Mounting hardware: stainless steel / passivated

EMI O-ring: conductibe fluorosilicone Standard O-ring: fluorosilicone/silicone blend

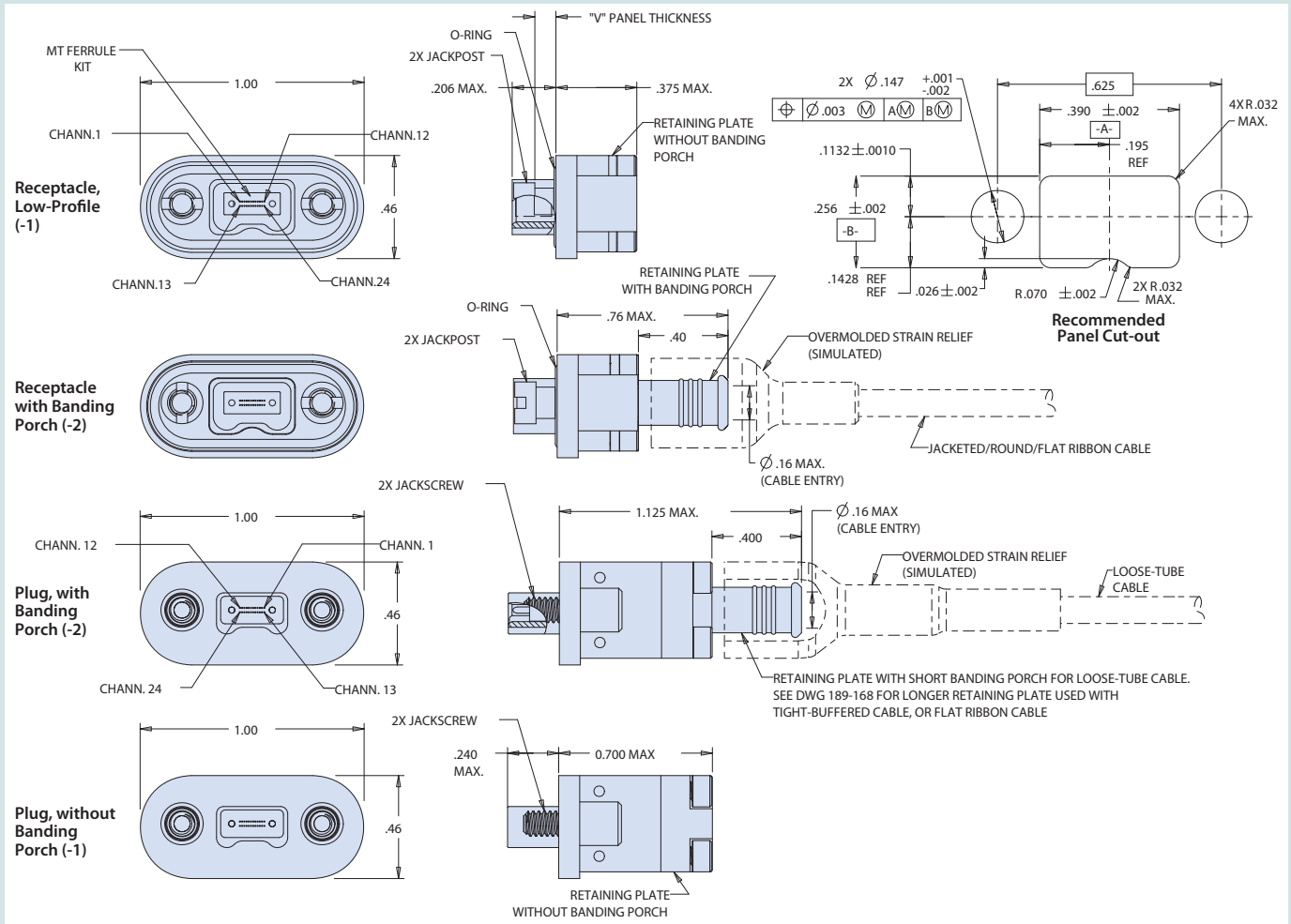
Additional materials, finishes, connector configurations (dual and quad layouts), and hardware options are available, consult factory

Connectors supplied without MT ferrule kit, purchase separately per P/N 181-133 or 181-150

# SERIES 79 MINIATURE MT Fiber Optic Connectors



## 183-021 Series 79 MT with expanded polarized keying positions and #4-40 UNC jackscrew · Connector styles and dimensions



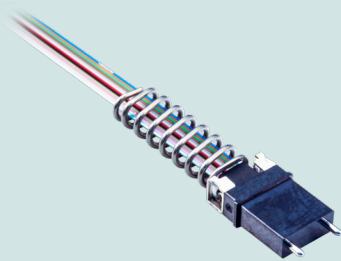
POLARIZED KEYING POSITIONS (Front view, receptacle) CODES and Plug / Receptacle Key Designations

				(Omit) No Polarization Key, Plug			
				-U Universal Key Receptacle			



# SERIES 79 MINIATURE MT Fiber Optic Connectors

## How To Order MT Ferrule Kits



How To Order					
Sample Part Number		181-133	-126	-12	P
Basic Part Number	MT Ferrule kit				
Fiber type	-126, -1253, -1253A (See Table I)				
Number of Fibers	-12, -24 (See Table I)				
Ferrule Style	P = Male (use with Plug)   S = Female (use with Receptacle)				

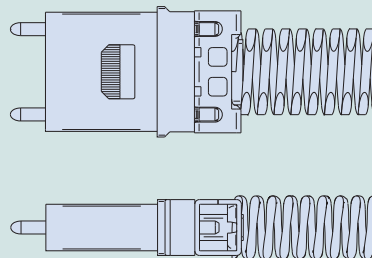


Table I						
Dash No.	Fiber Type	End Face	Fiber Size Core/Cladding	No. of Fibers	Ferrule Identification	Pin Clamp Identification (Male Kit only)
-126	MM	PC	50/125 62.5/125	12 24	M-ME12 M-ME24	1 Through Hole
-1253	SM	PC	9/125	12	E-E12	2 Through Holes
-1253A	SM	APC	9/125	12	E-E12	2 Through Holes

### MATERIAL/FINISH

- Ferrule: Polyphenylene Sulfide Resin
- Pin Clamp, Spring: Stainless Steel
- Boot: TPE

# SERIES 79 MINIATURE MT Fiber Optic Connectors



## How To Order Series 79 MT to MT Ferrule Cable Assembly

How To Order	
<b>Sample Part Number</b>	FA07364 -06 -17 ME -B4 -50 -L -1 -036 L
<b>Basic Number</b>	Series 79 MT Ferrule Fiber Optic Cable Assembly
<b>A Connector Type</b>	-06 = Sr. 79 Plug 183-003 (used with male MT ferrule) -07 = Sr. 79 Receptacle 183-003 (used with female MT ferrule) -S7 = Sr. 79 Receptacle 183-003 with EMI gasket (used with female MT ferrule)
<b>B Connector Type</b>	-06 = Sr. 79 Plug 183-003 (used with male MT ferrule) -07 = Sr. 79 Receptacle 183-003 (used with female MT ferrule) -S7 = Sr. 79 Receptacle 183-003 with EMI gasket (used with female MT ferrule) -12 = ST Connector -13 = FC Connector -14 = SC Connector -15 = GC Connector -16 = LC Connector -17 = MT Connector (male) -18 = MT Connector (female) -19 = MTP Connector (male) -20 = MTP Connector (female)
<b>Material / Finish (-06, -07, -S7)</b>	ME = Al Alloy / Electroless Nickel MT = Al Alloy / Nickel PTFE ZR = Al Alloy / Zinc Nickel, Black NF = Al Alloy / Cadmium, O.D. Z1 = Stainless Steel / Passivate
<b>Fiber Qty. / Type</b>	-B2 = 12 bare ribbon fibers -B4 = 24 bare ribbon fibers -R2 = 12 round ribbon fibers -R4 = 24 round ribbon fibers
<b>Fiber Size</b>	-09 = 9.3/125 Singlemode -50 = 50/125 Multimode -62 = 62.5/125 Multimode
<b>Mounting Hardware (A Connector)</b>	<b>Plug</b> -L = Hex head jackscrew, non-removable -B = Thru-hole <b>Receptacle</b> -X = Rear-panel jackpost, .031" thickness -W = Rear-panel jackpost, .041" thickness -V = Rear-panel jackpost, .062" thickness -T = Rear-panel jackpost, .094" thickness -R = for .080" panel thickness
<b>Mounting Hardware (B Connector, applies to Sr. 79 only)</b>	<b>Series 79 Plug</b> -L = Hex head jackscrew, non-removable -B = Thru-hole -K = Slotted Head Jackscrew, non-removable <b>Series 79 Receptacle</b> -X = Rear-panel jackpost, .031" thickness -W = Rear-panel jackpost, .041" thickness -V = Rear-panel jackpost, .062" thickness -T = Rear-panel jackpost, .094" thickness <b>Omit</b> = if not Sr. 79 connector
<b>Banding Platform (A Connector)</b>	-1 = without banding platform -2 = with banding platform
<b>Banding Platform (B Connector, applies to Sr. 79 only)</b>	-1 = without banding platform -2 = with banding platform <b>Omit</b> if not Sr. 79 connector
<b>Length</b>	In inches (e.g. -0036 = 36 inches)
<b>Protective Cover</b>	L = supplied less covers <b>Omit</b> = supplied with covers

