

NEXT-GENERATION
MICRO
MINIATURE
CONNECTORS

Super-Twin[®]

Lightweight Composite Modular Connectors



High-density drop-in replacements for legacy modular rectangular connectors save weight, space, and assembly time

The Glenair Series 20 Super-Twin™ lightweight modular connector is a drop-in replacement for legacy cable and panel connectors that no longer meet packaging requirements and performance specifications—especially for ease of assembly, electromagnetic compatibility and size, weight and power optimization.

The Glenair Series 20 Super-Twin™ can accommodate a broad range of contact sizes and types from #23 to #8 signal, Quadrax, El Ochito®, power, and fiber. Modular inserts offer fast and flexible assembly and repair. Peripheral and grommet seals provide outstanding environmental protection. Keyed inserts and shells provide versatile polarization and protection against mis-mating. The innovative clamshell and banding porch design brings modern, state-of-the-art connector capabilities to modular cable and panel applications. The lightweight connector is used in cable as well as panel/avionics bay applications, and is designed to replace larger and heavier legacy connectors.



- For reduced size and weight cable and panel applications
- Flexible assembly and repair
- Environmentally sealed
- Meets highest performance requirements for rack-and-panel modular systems
- Replaces heavier and larger legacy connectors
- Series 200: modular inserts, composite shell, integral strain relief/backshell
- Series 201: separate backshell, crimp or PC tail, typically composite shells. Mates with Sr. 200

SERIES 20 SUPER-TWIN™

Lightweight composite connector for cable and rack-and-panel applications



SUPER-TWIN™ TECHNICAL OVERVIEW



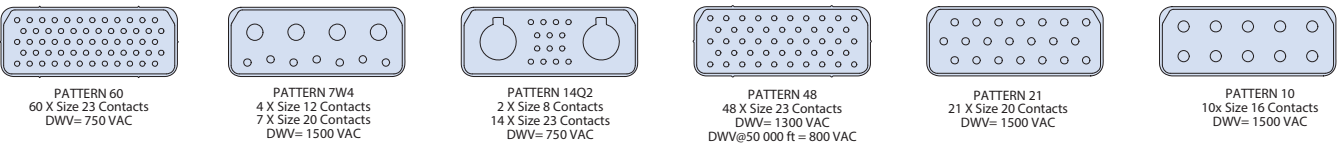
Weight Study, Typical Regional Jet Airframe

Series 20 Super-Twin™
 Mated Pair: 67g
 Weight/Plane: 7,661g
 Legacy rectangular: aluminum
 Mated Pair: 192g
 Weight/Plane: 22,103g
 Legacy rectangular: composite
 Mated Pair: 141g
 Weight/Plane: 16,123g

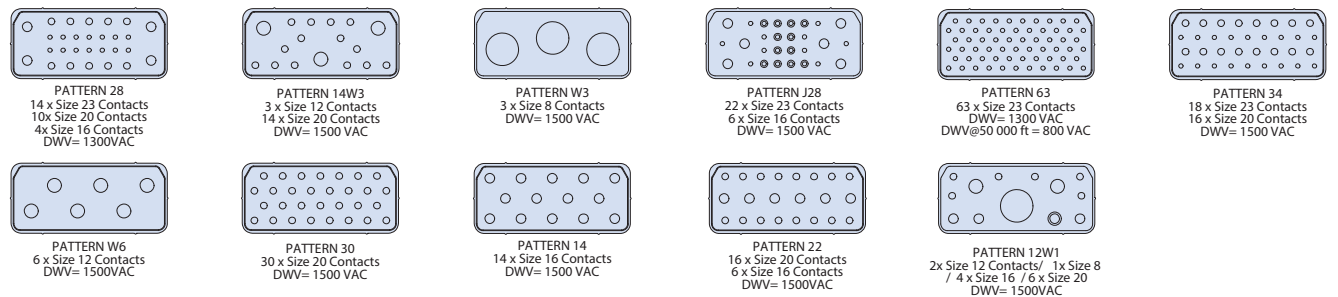
Summary:

Using Series 20 composite instead of legacy aluminum connector saves **14,442 grams** (31.8 lbs) per plane.
 Using Series 20 composite instead of legacy composite connector saves **8,482 grams** (18.6 lbs) per plane

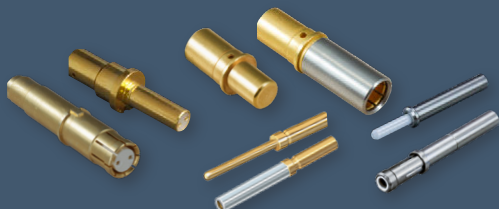
SUPERTWIN™ SIZE 2 CONTACT ARRANGEMENTS



SUPERTWIN™ SIZE 3 CONTACT ARRANGEMENTS



Keyed, snap-in-place insert modules are currently available in seventeen tooled layouts, accommodating size #23, #20, #16, #12 and keyed size #8 contacts (for use with Quadrax or El Ochito™ contacts).



Modular inserts easily removed with available tool

Center jackscrew for secure connector-to-connector mating