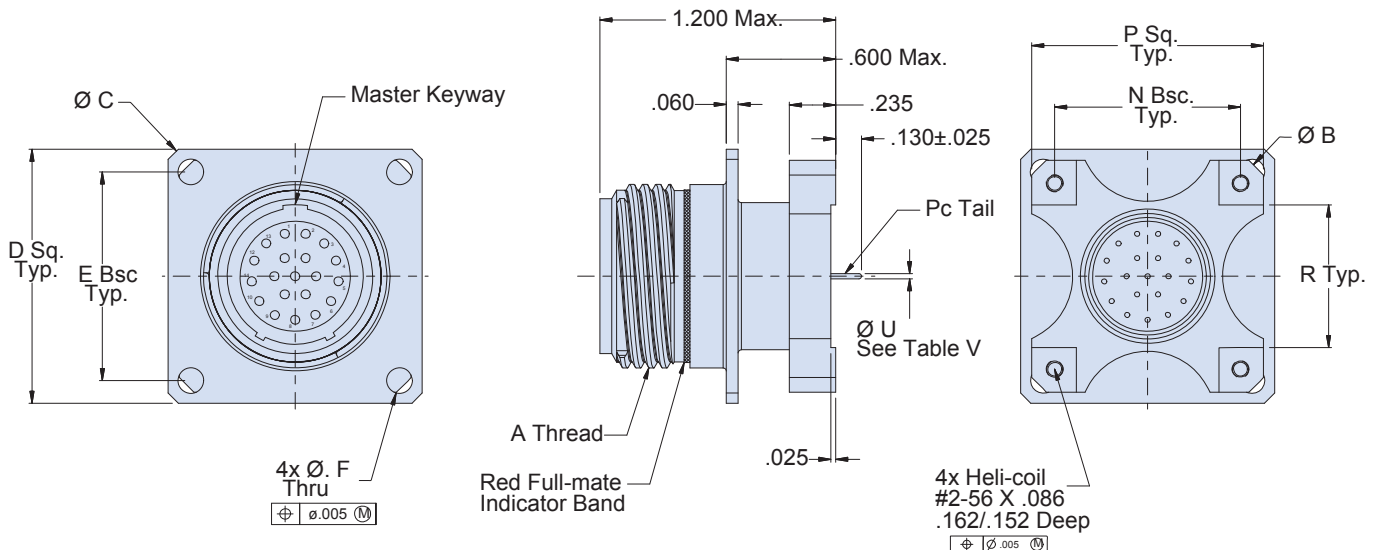


## MIGHTY MOUSE FILTER CONNECTOR, DUAL-FLANGE WALL-MOUNT RECEPTACLE

How To Order	
Sample Part Number	240-805- <span style="font-size: 1.2em;">12</span> <span style="font-size: 1.2em;">M</span> <span style="font-size: 1.2em;">8-7</span> <span style="font-size: 1.2em;">P</span> <span style="font-size: 1.2em;">P</span> <span style="font-size: 1.2em;">P</span> <span style="font-size: 1.2em;">A</span> <span style="font-size: 1.2em;">A</span>
Filter Connector	Series 805 Mighty Mouse
Shell Style	<b>12</b> = Square flange receptacle with PCB contacts
Shell Material/Finish	See Table I
Insert Arrangement	See pages C-3 – C-7
Contact Gender	<b>P</b> = Pin <b>S</b> = Socket
Termination Type	<b>P</b> = PC Tail
Filter Type	<b>P</b> = Pi Circuit <b>C</b> = C Circuit (See Note 1)
Capacitance	See Table II
Alternate Key Position	<b>A, B, C, D, E, F, U</b> <b>A</b> = Normal, <b>U</b> = Universal (See page C-2)



### Notes

- Other filter styles (C-L, L-C, Unbalanced Pi, Multi-Stage, Multi-Value) are available, please consult the factory.

Dimensions in inches (millimeters) and are subject to change without notice.

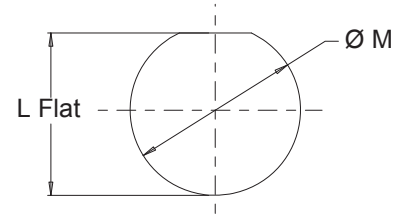
**240-805-12**  
**Series 805 Mighty Mouse Filter Connector**  
**Receptacles with Triple-Start ACME Coupling Threads**



Mighty Mouse

**Table I: Connector Class**

Sym	Material	Finish Description
M	Aluminum	Electroless Nickel
MT		Ni-PTFE 1000 Hour Grey™ Nickel Fluorocarbon Polymer
NF		Cadmium, Olive Drab over Electroless Nickel
ZN		Zinc-Nickel, Olive Drab
ZR		Zinc-Nickel, Black - RoHS
ZL	Stainless Steel	Electro-Deposited Nickel



**Table II: Capacitor Array Code Capacitance Range**

Class	Pi - Circuit (pF)	C - Circuit (pF)
A	38,000 - 56,000	19,000 - 28,000
B	32,000 - 45,000	16,000 - 22,500
C	18,000 - 33,000	9,000 - 16,500
D	8,000 - 12,000	4,000 - 6,000
E	3,300 - 5,000	1,650 - 2,500
F	800 - 1,300	400 - 650
G	400 - 600	200 - 300
J	70 - 120	35 - 60

**Recommended Panel Cut-Out**

Shell Size	ØM	L Flat
5	.387 (9.8)	.358 (9.1)
	.383 (9.7)	.354 (9.0)
6	.449 (11.4)	.418 (10.6)
	.445 (11.3)	.414 (10.5)
7	.574 (14.6)	.544 (13.8)
	.570 (14.5)	.540 (13.7)
8	.574 (14.6)	.544 (13.8)
	.570 (14.5)	.540 (13.7)
9	.637 (16.2)	.604 (15.3)
	.633 (16.1)	.600 (15.2)
10	.699 (17.8)	.666 (16.9)
	.695 (17.7)	.662 (16.8)
11	.762 (19.4)	.726 (18.4)
	.758 (19.3)	.722 (18.3)
13	.887 (22.5)	.853 (21.7)
	.883 (22.4)	.849 (21.6)
16	1.077 (27.4)	1.030 (26.2)
	1.073 (27.3)	1.026 (26.1)
17	1.137 (28.9)	1.104 (28.0)
	1.133 (28.8)	1.100 (27.9)
19	1.262 (32.1)	1.235 (31.4)
	1.258 (32.0)	1.231 (31.3)
21	1.387 (35.2)	1.355 (34.4)
	1.383 (35.1)	1.351 (34.3)

**Table V:  
PC Tail Dia**

Contact Size	Ø U
23	.022 (0.56)
	.018 (0.46)
20	.028 (0.71)
	.024 (0.61)
16	.042 (1.07)
	.038 (0.97)
12	.096 (2.44)
	.092 (2.34)

**Table III: Dimensions**

Shell Size	A Thread	B Dia	C Dia	D Sq	E Bsc	F Holes	N Bsc	P Sq	R
8	.5000-1P-.3L-TS-2A	.800 (20.3)	1.150 (29.2)	.850 (21.6)	.660 (16.8)	.096 (2.4) .091 (2.3)	.423 (10.7)	.590 (15.0)	.203 (5.2)
9	.5625-1P-.3L-TS-2A	.900 (22.9)	1.230 (31.2)	.913 (23.2)	.723 (18.4)		.483 (12.3)	.650 (16.5)	.263 (6.7)
10	.6250-1P-.3L-TS-2A	.980 (24.9)	1.330 (33.7)	.975 (24.8)	.785 (19.9)		.545 (13.8)	.712 (18.1)	.325 (8.3)
11	.6875-1P-.3L-TS-2A	1.080 (27.4)	1.410 (35.8)	1.039 (26.4)	.848 (21.5)		.607 (15.4)	.850 (21.6)	.387 (9.8)
12	.7500-1P-.3L-TS-2A	1.160 (29.5)	1.500 (38.1)	1.099 (27.9)	.909 (23.1)		.670 (17.0)	.890 (22.6)	.450 (11.4)
13	.8125-1P-.3L-TS-2A	1.220 (31.0)	1.590 (40.4)	1.163 (29.5)	.973 (24.7)		.715 (18.2)	.935 (23.7)	.495 (12.6)
15	.9375-1P-.3L-TS-2A	1.370 (34.8)	1.750 (44.5)	1.288 (32.7)	1.058 (26.9)	.130 (3.3) .126 (3.2)	.812 (20.6)	1.030 (26.2)	.592 (15.0)
18	1.1250-1P-.3L-TS-2A	1.620 (41.1)	2.000 (50.8)	1.475 (37.5)	1.255 (31.9)		.981 (24.9)	1.219 (31.0)	.761 (19.3)
19	1.1870-1P-.3L-TS-2A	1.720 (43.7)	2.094 (53.2)	1.537 (39.0)	1.327 (33.7)		1.060 (26.9)	1.280 (32.5)	.840 (21.3)
21	1.3125-1P-.3L-TS-2A	1.920 (48.8)	2.270 (57.7)	1.663 (42.2)	1.452 (36.9)		1.191 (30.3)	1.432 (36.4)	.971 (24.7)
23	1.4375-1P-.3L-TS-2A	2.100 (53.3)	2.440 (62.0)	1.787 (45.4)	1.570 (39.9)		1.322 (33.6)	1.565 (39.8)	1.102 (28.0)
							1.322 (33.6)	1.565 (39.8)	1.102 (28.0)

Dimensions in inches (millimeters) and are subject to change without notice.