

# MICRO CRIMP

## 790-090 Rear-Panel Mount Hermetic Feedthrough, Pin-Socket

HOW TO ORDER			
<b>Sample Part Number</b>	<b>790-090</b>	<b>H</b>	<b>K</b>
<b>Basic Part Number</b>	790-090 Rear-Panel Mount Hermetic Feedthrough, Pin-Socket		
<b>Class</b>	H = Hermetic		
<b>Shell Size</b>	A, B, C, D, E, F, J, K, G, H, L and M		
<b>Arrangement</b>	Refer to 799-009 for Insert Arr. (No "W" Option for Hermetic)		
<b>Mating Hardware Option</b>	N = No Mating Hardware P = Jackpost	G = Male Guide Pins S = Female Guide Sockets	

### MATERIAL AND FINISH

- Shell - Kovar Alloy / Nickel Plate
- Contacts, Hermetic - Kovar Alloy / Gold Plate
- Contacts, Sockets - Copper Alloy / Gold Plate
- Insulator, Hermetic - Vitreous Glass
- Insulator, Sockets - Rigid Dielectric
- Seals - Fluorosilicone Blend / None
- Mating Hardware - CRES / Passivated

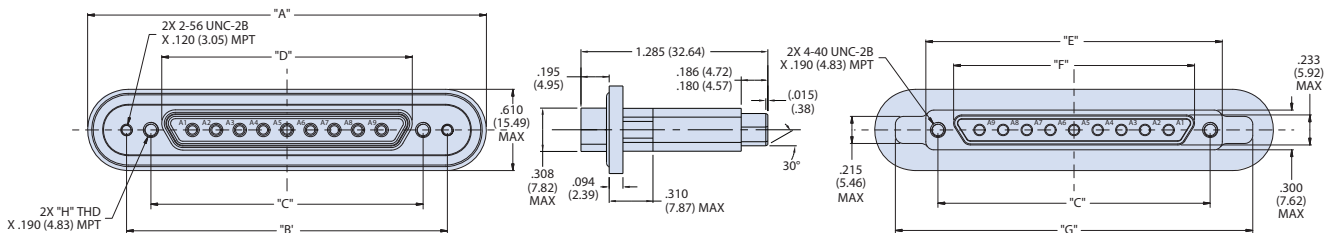
### NOTES

- Test Criteria:
- Hermeticity -  $< 1 \times 10^{-6}$  Scche/Sec @ 1 Atm. Delta
- D.W.V.
- #23 Pins: 500 VAC Pin-To-Shell
  - #16 Pins: 1800 VAC Pin-To-Shell
  - #12 Pins: 1800 VAC Pin-To-Shell
  - I.r. - 5,000 Megohms Minimum @ 500 Vdc
  - Glenair 790-090 will mate with any Series 79 plug/receptacle with same shell size and insert
  - Glenair 790-090 is designed to utilize 799-016 EMI backshells.

### Mounting Hardware

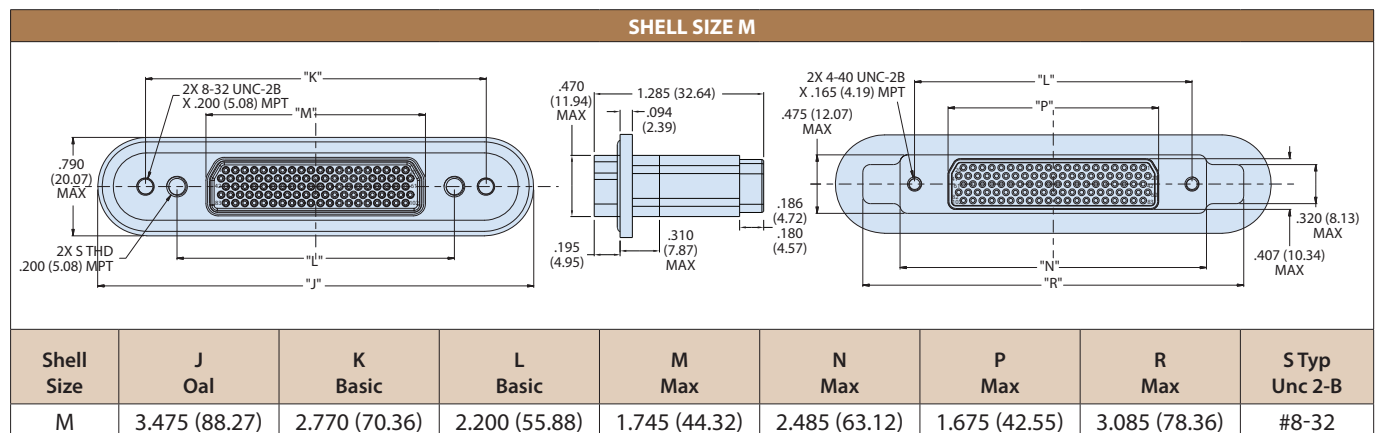
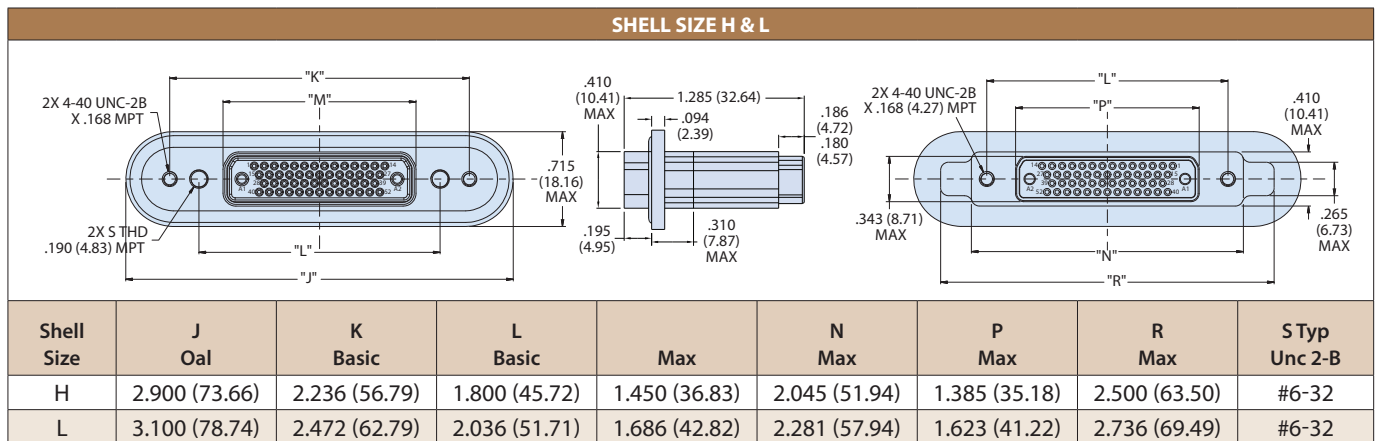
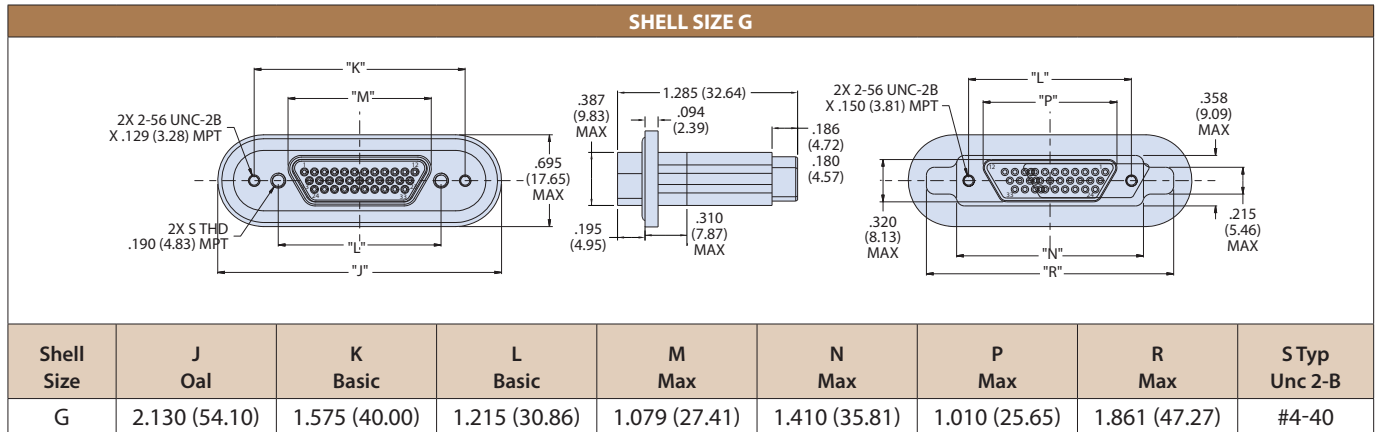
<b>P</b> Jackpost	Connector supplied with non-removable jackpost. Shell size "M" has 6-32 UNC-2B thread. Shell sizes "H" And "L" have 4-40 UNC-2B thread. All other sizes Have 2-56 UNC-2B thread.
<b>G</b> Guide Pin	Connector supplied with non-removable guide pins for blind mate applications. Mates with option "S" guide socket on corresponding plug connector.
<b>S</b> Guide Socket	Connector supplied with non-removable guide sockets for blind mate applications. Mates with option "G" guide pin on corresponding plug connector.

### SHELL SIZE A, B, C, D, E, F, J, AND K DIMENSIONS



Shell Sizes	A Oal	B Basic	C Basic	D Max	E Max	F Max	G Max	H Typ Unc 2-B
A	1.490 (37.85)	0.925 (23.50)	0.565 (14.35)	0.401 (10.19)	0.760 (19.30)	0.335 (8.51)	1.215 (30.86)	#4-40
B	1.680 (42.67)	1.075 (27.30)	0.715 (18.16)	0.551 (14.00)	0.910 (23.11)	0.485 (12.32)	1.365 (34.67)	
C	1.785 (45.34)	1.225 (31.12)	0.865 (21.97)	0.701 (17.81)	1.060 (26.92)	0.635 (16.13)	1.515 (38.48)	
D	1.975 (50.17)	1.325 (33.65)	0.965 (24.51)	0.801 (20.35)	1.160 (29.46)	0.735 (18.67)	1.615 (41.02)	
E	2.075 (52.71)	1.475 (37.47)	1.115 (28.32)	0.951 (24.16)	1.310 (33.27)	0.885 (22.48)	1.765 (44.83)	
F	2.175 (55.24)	1.625 (41.28)	1.265 (32.13)	1.101 (27.97)	1.460 (37.08)	1.035 (26.29)	1.915 (48.64)	
J	2.665 (67.69)	1.975 (50.17)	1.615 (41.02)	1.460 (37.08)	1.810 (45.97)	1.390 (35.31)	2.265 (57.53)	
K	2.960 (75.18)	2.375 (60.33)	2.015 (51.18)	1.860 (47.24)	2.210 (56.13)	1.795 (45.59)	2.665 (67.69)	

790-090 Rear-Panel Mount Hermetic Feedthrough, Pin-Socket



# MICRO CRIMP

## 790-090 Rear-Panel Mount Hermetic Feedthrough, Pin-Socket

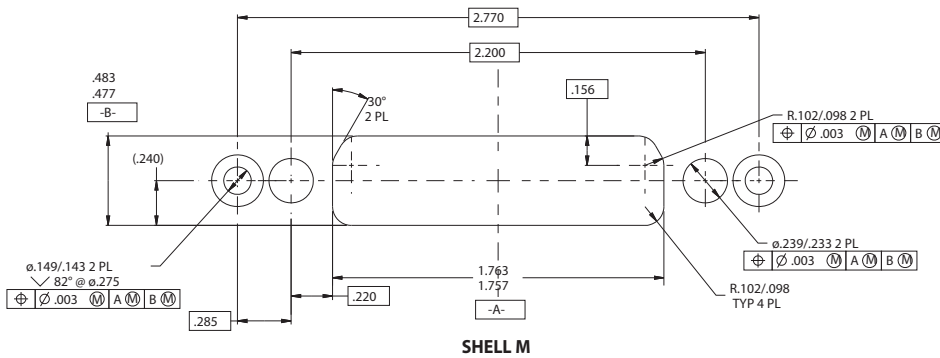
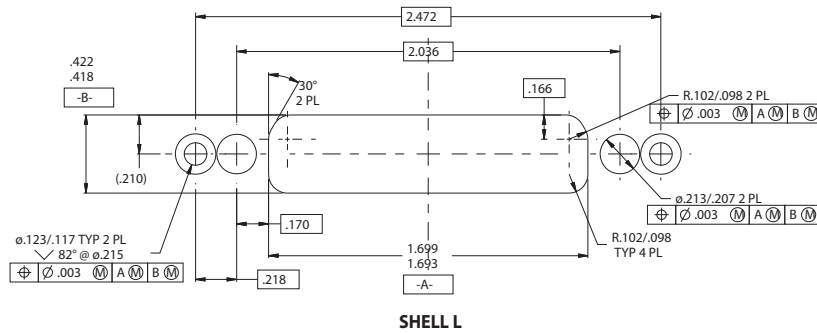
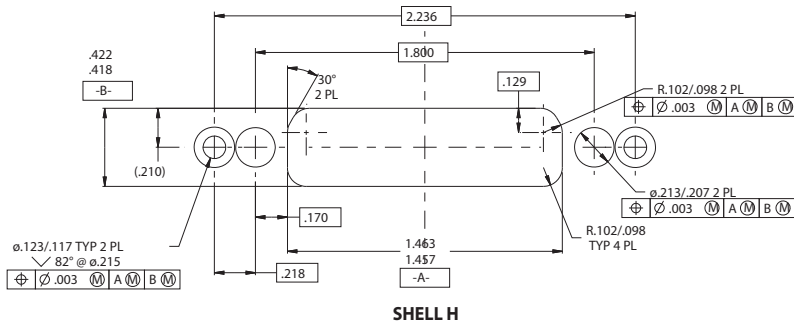
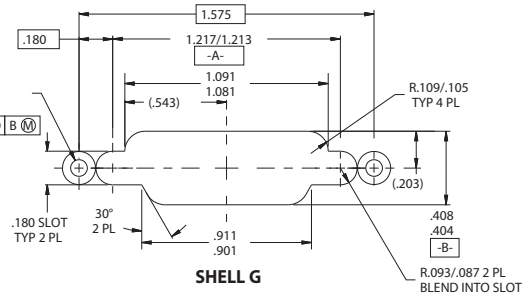
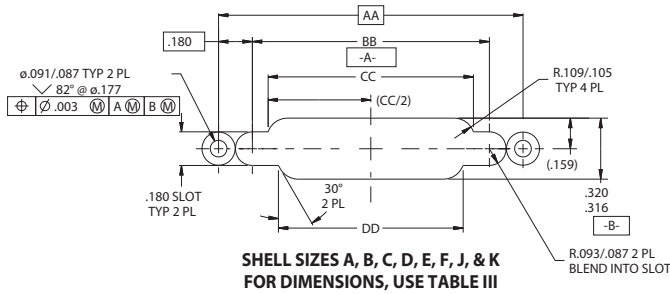


TABLE III				
Shell Size	AA BASIC	BB ±.002	CC ±.005	DD ±.005
A	0.925 (23.50)	0.565 (14.35)	0.396 (10.06)	0.286 (7.26)
B	1.075 (27.30)	0.715 (18.16)	0.546 (13.87)	0.436 (11.07)
C	1.225 (31.12)	0.865 (21.97)	0.696 (17.68)	0.586 (14.88)
D	1.325 (33.65)	0.965 (24.51)	0.796 (20.22)	0.686 (17.42)
E	1.475 (37.47)	1.115 (28.32)	0.946 (24.03)	0.836 (21.23)
F	1.625 (41.28)	1.265 (32.13)	1.096 (27.84)	0.986 (25.04)
J	1.975 (50.17)	1.615 (41.02)	1.448 (36.78)	1.345 (34.16)
K	2.375 (60.33)	2.015 (51.18)	1.848 (46.94)	1.740 (44.20)