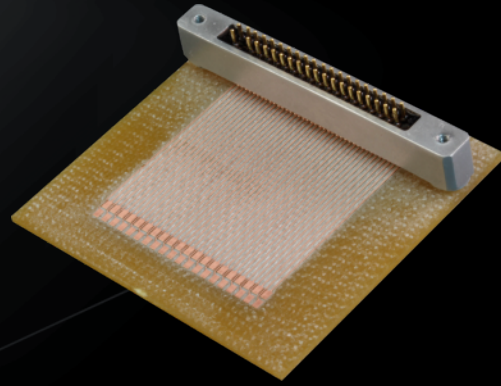
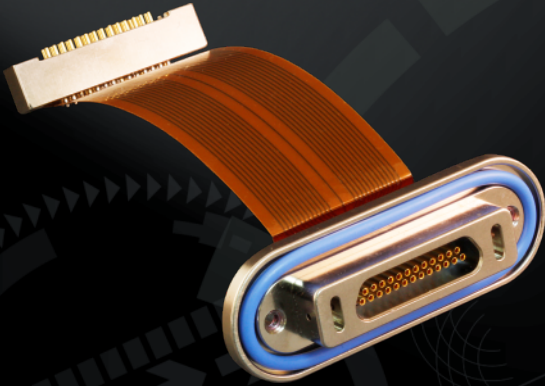


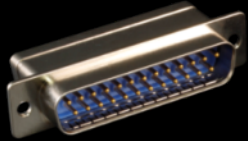
The widest range of  
mission-critical interconnect  
technologies in the world



**AlphaLink Spring-Loaded-Contact  
Board-Level Connectors**

# Rectangular Connector Series Summary

## HiPer-D



*Glenair Sr. 28*

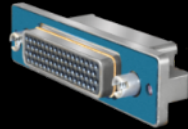
M24308

5 - 40 AMPs

31 Layouts

9-104 Ways

## Micro-Crimp



*Glenair Sr. 79*

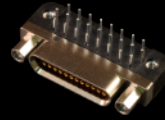
N/A

5-23 AMP

33 Layouts

2-102 Ways

## Micro-D



*Glenair Sr. 17*

M83513

3 AMP

8 Layouts

9-100 Ways

## AlphaLink



*Glenair Sr. 171*

N/A

2 AMP

12 Layouts

4-40 Ways

## Nano



*Glenair Sr. 89*

M32139

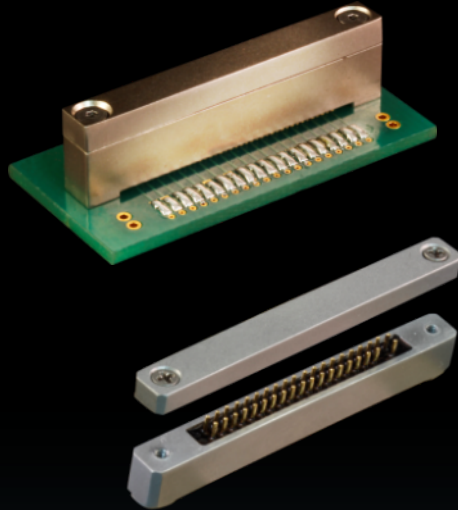
1 AMP

7 Layouts

9-85 Ways

# AlphaLink SL Board Connectors

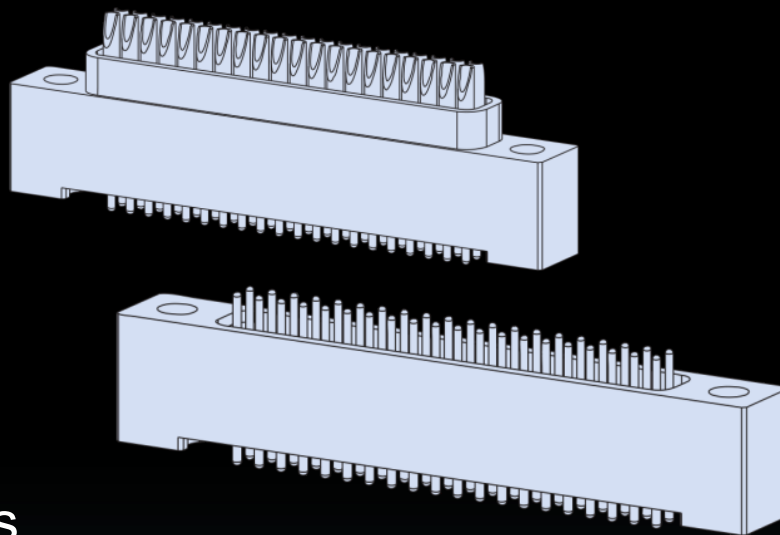
With spring-loaded solderless contact



- Spring-loaded “SL” PogoPin board-level connector
- Easy attachment, minor board preparation
- Lightweight, low-profile

# AlphaLink SL Board Connectors

- Series 171-134
- Three Types
  - Solder cup
  - Pigtail
  - PC tails
- 2 AMP: 150 VDC
- .050" spacing
- Gold plated SL contacts



# AlphaLink Flex Jumpers

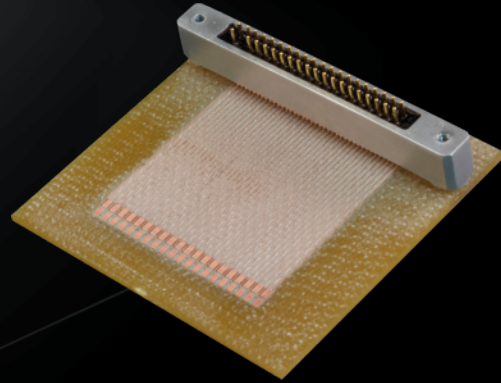
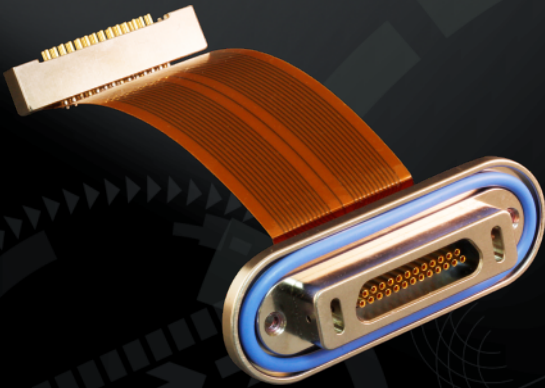


## Turnkey Micro-D or Nano to AlphaLink jumpers

- 1770-2449 = Micro
- 891-041 = Nano
- 893-012/-013 = Nano Circular
- (Also available for Mighty Mouse, MicroCrimp and SuperFly)



The widest range of  
mission-critical interconnect  
technologies in the world



**AlphaLink Spring-Loaded-Contact  
Board-Level Connectors**