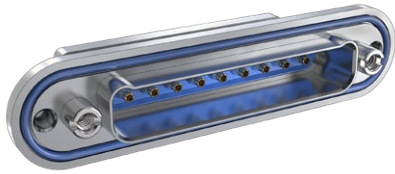


795-012P
 Panel Mount Receptacle, Pin Contacts

- Size #16 Contacts
- 65 GHz SMPS Coax
- All-Aluminum Body
- Environmental
- Two to Seventeen Ports
- Scoop-Proof

SERIES 795 MULTI-PIN RF CONNECTORS



Three to eleven ports. Size 16 contacts. 795-012 receptacles have machined aluminum housings and fluorosilicone grommet for environmental protection. Size 16 pin contact cavities have beryllium copper retention clips. Use with 65 GHz SMPS coax contacts (P/N 852-133, ordered separately).

CONSTRUCTION

- Shell: aluminum
- Grommet: fluorosilicone
- Jackscrew: SST, passivated
- Contact retainer clip: copper alloy, unplated

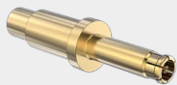
SPECIFICATIONS

- Operating temperature: -55 °C to +125 °C
- Shock: EIA-364-27 Condition D
- Vibration: EIA-364-28 Condition V Letter E
- Shell-to-shell resistance: 2.5 milliohms max. with ground spring option

COAX CONTACTS

*Not included with 795-012 connector.
 Sold separately.*

for S/R or Flexible Coax Cable

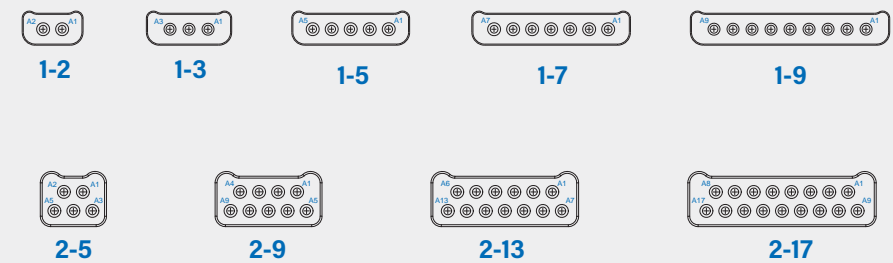


- Part Number **852-133**
- 65 GHz, solder termination
- Accepts .047 semi-rigid or flexible coax cable

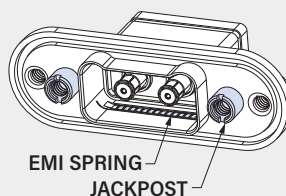
PART NUMBER

	795-012P	1-2	M	P	N
Base P/N	795-012P				
Arrangement No.	<i>See Table 1</i>				
	1-2 2 contacts				
	1-3 3 contacts				
	1-5 5 contacts				
	1-7 7 contacts				
	1-9 9 contacts				
	2-5 5 contacts, two row				
	2-9 9 contacts, two row				
	2-13 13 contacts, two row				
	2-17 17 contacts, two row				
Material/ Finish	M Alum/ Electroless Nickel				
	MT Alum/ Nickel-PTFE				
Jackpost	P Jackpost #8-32, Non-Removable				
	N No Jackpost				
O-ring	F Fluorosilicone O-Ring				
	C Conductive O-ring				
	N No O-ring				
	S Metal EMI Spring (non-environmental)				

TABLE 1 ARRANGEMENT NUMBER



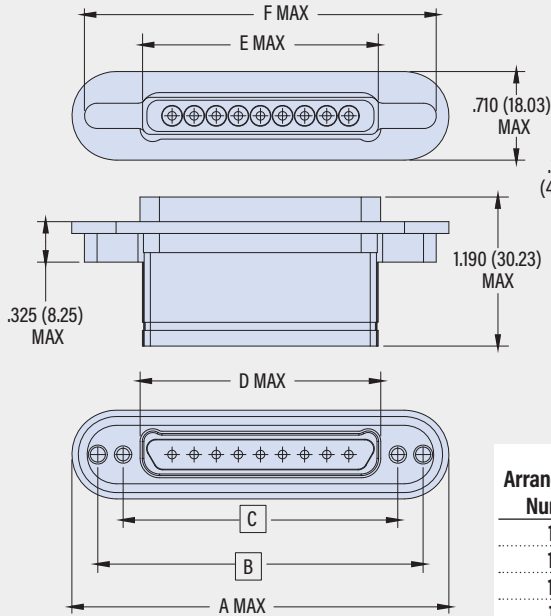
JACKPOST AND EMI SPRING



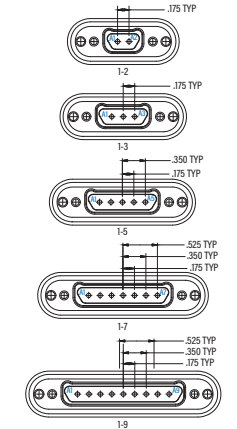
795-012P
 Panel Mount Receptacle, Pin Contacts

- Size #16 Contacts
- 65 GHz SMPS Coax
- All-Aluminum Body
- Environmental
- Two to Seventeen Ports
- Scoop-Proof

795-012P SINGLE ROW

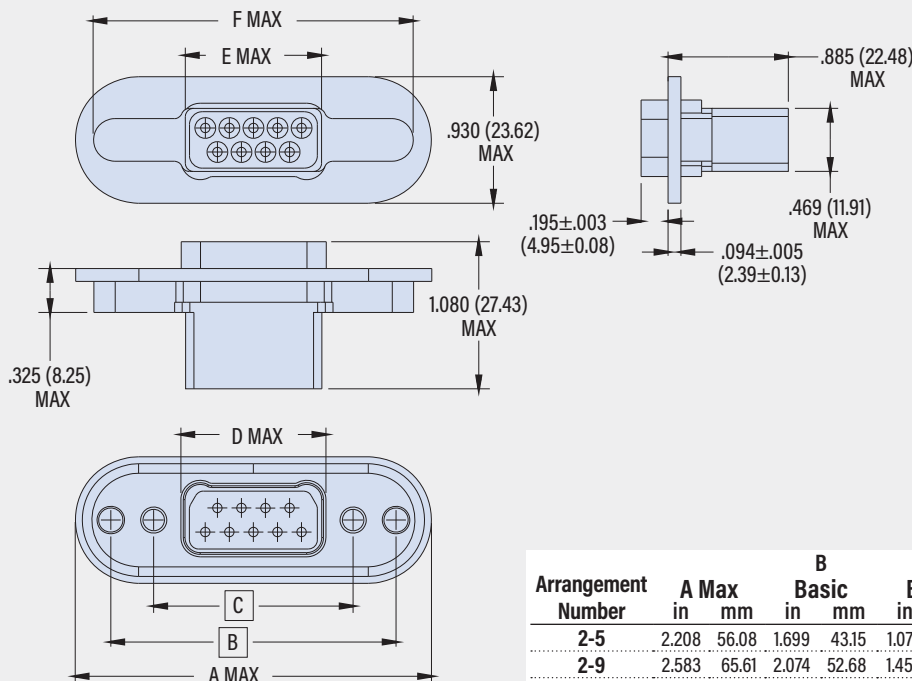


SINGLE ROW ARRANGEMENTS
 RECEPTACLE MATING FACE VIEW

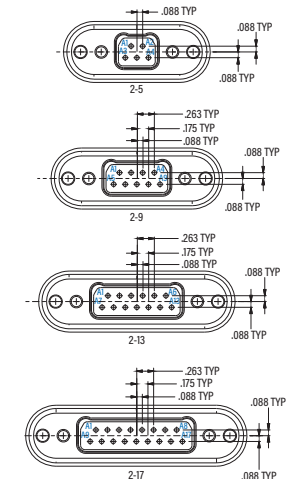


Arrangement Number	A Max		B Basic		C Basic		D Max		E Max		F Max	
	in	mm	in	mm	in	mm	in	mm	in	mm	in	mm
1-2	1.715	43.56	1.300	33.02	0.900	22.86	0.565	14.35	0.635	16.13	0.560	14.22
1-3	1.940	49.28	1.525	38.74	1.125	28.58	0.790	20.07	0.860	21.84	0.810	20.57
1-5	2.240	56.90	1.825	46.36	1.425	36.20	1.090	27.69	1.160	29.46	1.110	28.19
1-7	2.615	66.42	2.200	55.88	1.800	45.72	1.465	37.21	1.535	38.99	1.462	37.13
1-9	2.990	75.95	2.575	65.41	2.175	55.25	1.840	46.74	1.910	48.51	1.872	47.55

795-012P TWO ROW



SINGLE ROW ARRANGEMENTS
 RECEPTACLE MATING FACE VIEW



Arrangement Number	A Max		B Basic		C Basic		D Max		E Max		F Max	
	in	mm	in	mm	in	mm	in	mm	in	mm	in	mm
2-5	2.208	56.08	1.699	43.15	1.075	27.31	.684	17.37	.620	15.75	1.965	49.91
2-9	2.583	65.61	2.074	52.68	1.450	36.83	1.059	26.90	.995	25.27	2.340	59.44
2-13	2.958	75.13	2.449	62.20	1.825	46.36	1.434	36.42	1.370	34.80	2.715	68.96
2-17	3.350	85.09	2.824	71.73	2.200	55.88	1.809	45.95	1.745	44.32	3.090	78.49

SERIES 795 MULTI-PIN RF CONNECTORS