

061-022

# Medium-duty hold-down release mechanism

4000 lb. release preload  
Redundant circuit

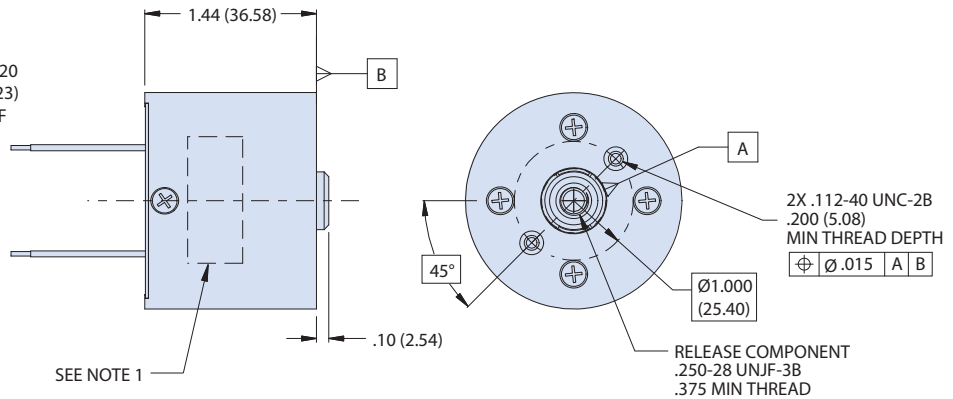
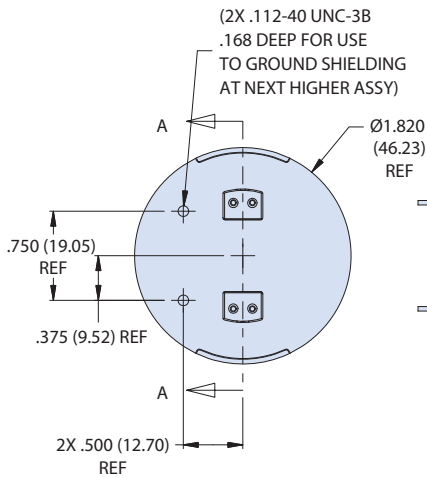
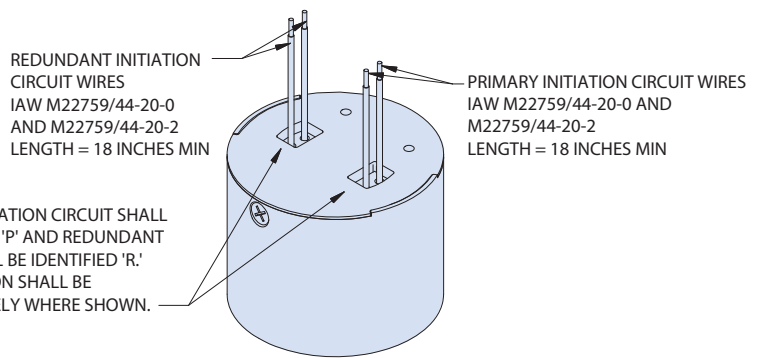


A



## REDUNDANT CIRCUIT HOLD DOWN RELEASE MECHANISM, MEDIUM DUTY

How To Order		
Sample Part No.	061	-022
Basic Part No.	Medium Duty HDRM	
Dash No.	Redundant Circuit	



### NOTES

- Unit is identified with Glenair name, CAGE code, part number, and date code, space permitting. Primary initiation circuit identified with "P" and redundant with "R".
- Release preload 4000 lbs. (17.8 kN)
- Reference Glenair P/N 060-122 for refurbishment initiator
- Nominal actuation current 3.5 Amps
- Qualification test report available

Physical characteristics	
Mass	224 grams nominal weight
Release component thread	0.250-28 UNJF-3 B*
Material list	IAW MSFC-STD-3029
Epoxy	Outgassing requirements per GSC19384
Device features	
Redundant initiation	2 initiation points
Field refurbishable	Initiator can be replaced in less than 15 minutes by trained personnel
Packaging	External housing typically supplied with two mounting points. Custom housings and mountings available
Connectorization	Standard design supplied with wire inputs. Connectorized versions available
Scalable bolt size	Bolt size determines preload and can be scaled to accommodate a wide range of requirements
*Size callout based on the bolt size to be used. Metric thread also available. Consult factory for qualification test report.	

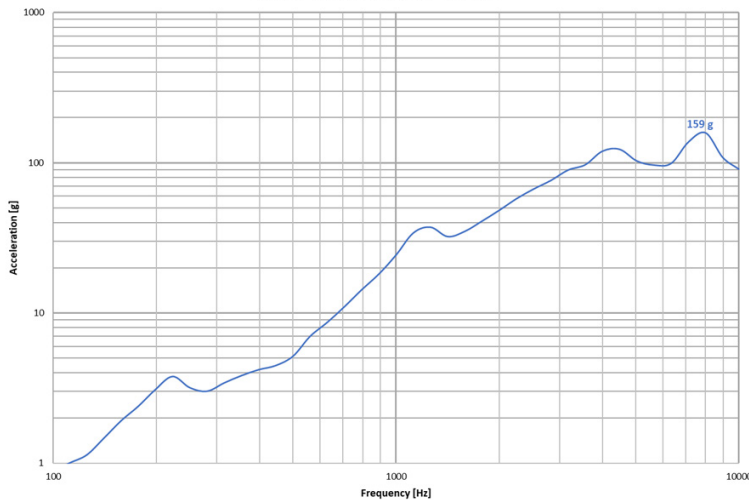
061-022

# Medium-duty hold-down release mechanism

4000 lb. release preload  
Redundant circuit



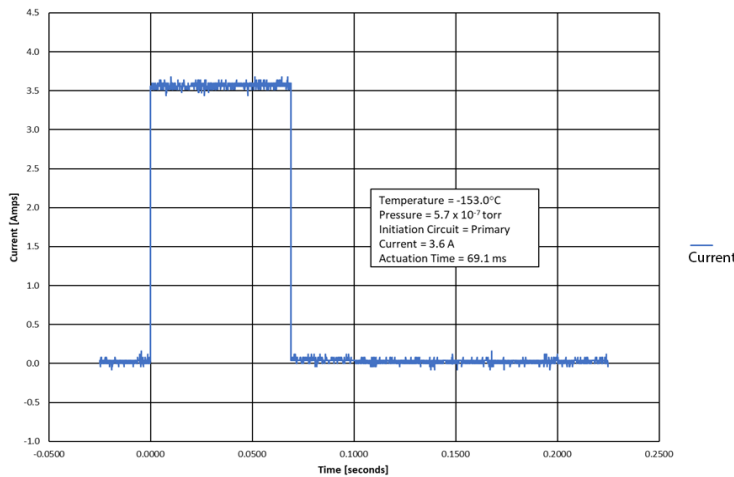
Shock Output of HDRM 061-022  
Primary Circuit Actuation @ 4,000 lbs



Tested capability for 061-022	
Nominal Release Preload	4,000 pounds
Electrical resistance	0.5 to 1.5 ohms
Random vibration: 3 orthogonal axes	50.9 G <sub>rms</sub>
Sine vibration: 3 orthogonal axes	25 G
Actuation time	Under 100 ms @ 3.5 Amps
Source shock	Under 200 G's @ 4,000 pounds
Life test	10 refurbishments during qualification and an expected continued usage
Temperature	-150°C to +150°C released in a vacuum (1x10 <sup>-5</sup> Torr)



061-022 Thermal Vacuum Actuation Cold (-150°C) S/N 001  
01/18/2023



Actuation Curve for 061-022 Mechanism  
(Nominal Conditions)

