



QUALIFIED

# MIL-DTL-28840

## Connectors and accessories



MIL-DTL-28840 qualified connectors  
in-stock and ready for immediate,  
same-day shipment

- High density, scoop proof contact arrangements
- Flange mount, box mount, jam-nut and in-line receptacles
- Straight, 45° and 90° strain reliefs and backshell assemblies
- Sav-Con® connector savers
- MIL-DTL-28840 qualified
- Additional glenair commercial part numbers with features not available in the mil-spec

Qualified military standard electrical connectors and accessories for shipboard—and all rugged environmental applications



Performance Specifications	
Current Rating (Maximum)	Size #20 Contact with 20AWG wire=7.5Amps, with 22AWG wire=5.0Amps
Test Voltage (DWV)	1000 VAC RMS at sea level. Test per EIA-364-20
Insulation Resistance	5000 megohms minimum (at ambient temperature) per EIA-364-21
Contact Resistance	Per SAE-AS39029
Operating Temperature	-55° C to +200° C
Immersion	per test method EIA-364-09
Shock	in accordance with MIL-S-901 grade A
Vibration	per EIA-364-28 test procedure
Magnetic Permeability	2.0 μ (Aluminum), 5.0 μ (Stainless Steel) maximum; ASTM-A342/A342M



Splined MIL-DTL-28840 connector-to-backshell interface is ideally suited for heavy backshells and cables

# QUALIFIED MIL-DTL-28840 Connectors and Accessories



## STANDARD PIN CRIMP CONTACT FOR MIL-DTL-28840 CONNECTORS



Mating End Size	Wire Accomodation	Military Part Number	Glenair Part Number
20	28-32 AWG	M39029/83-451	850-004-20-451
20	22-26 AWG	M39029/83-450	850-004-20-450
20	20-24 AWG	M39029/83-508	850-004-20-508

## STANDARD SOCKET CRIMP CONTACT FOR MIL-DTL-28840 CONNECTORS



Mating End Size	Wire Accomodation	Military Part Number	Glenair Part Number
20	28-32 AWG	M39029/84-453	850-005-20-453
20	22-26 AWG	M39029/84-452	850-005-20-452
20	20-24 AWG	M39029/84-509	850-005-20-509



**Crimping Tools**

M22520/34-01 Basic Crimp Tool  
M22520/34-02 Positioner  
M22520/35 Gage



**Insertion & Removal Tools**

M81969/33-01 Straight Insertion Tool  
M81969/33-02 Offset Insertion Tool  
M81969/34-01 Removal Tool



**Pin Contact**

M39029/83 Standard Duty Electrical Pin Contact



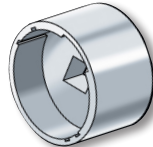
**Socket Contact**

M39029/84 Standard Duty Electrical Socket Contact



**Environmental Backshells**

M28840/6 B Straight  
M28840/9 B 45°  
M28840/8 B 90°



**EMI/RFI Environmental Backshells**

M28840/6 A Straight  
M28840/8 A 90°  
M28840/9 A 45°

**Connector Sockets**

600G005

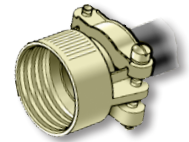
**"E" Nuts**



**Non-Self-Locking**

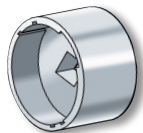
M28840/23

**Strain Reliefs**



**Non-Self-Locking**

M28840/1 Straight  
M28840/3 45°  
M28840/2 90°



**Dummy Stowage Receptacles**

M28840/7



**Protective Plug Covers**

M28840/15



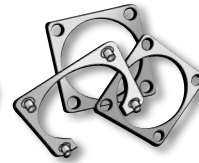
**Protective Receptacle Covers**

M28840/13



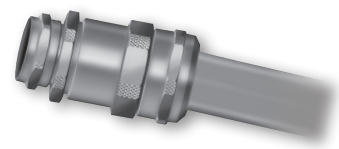
**Jam Nuts**

MS3186



**Mounting Flanges and Gaskets**

M28840/24 Gasket



**MIL-PRF-24758A Conduit Fittings**

M24758-14 Straight (M24758/14 Straight.)  
M28840/5 Straight • M28840/25 90° • M28840/27 45° • M28840/30 Coupling