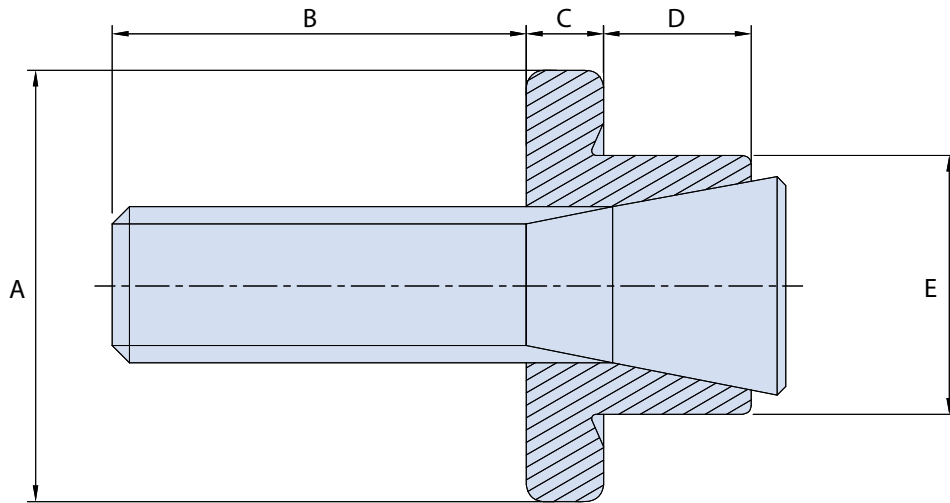


GroundControl
Earth Bond Ground Studs



Male earth bonds
 aluminum, for use with aluminum plate - 687-482

MALE EARTH BONDS, ALUMINUM



Dimensions											
Part Number	Thread Size	Ø A		B		C		D		E	
		in	mm	in	mm	in	mm	in	mm	in	mm
687-482-08	1/4" UNC	.630	16.00	.510	.70	.177	4.50	.177	4.50	7/16	11.11
687-482-09	1/4" UNC	.630	16.00	.630	.75	.138	3.51	.433	11.00	7/16	11.11
687-482-10	3/8" UNC	.984	24.99	.944	1.22	.216	5.49	.177	4.50	3/4	19.05
687-482-11	3/8" UNC	.984	24.99	1.102	1.22	.138	3.51	.433	11.00	19/32	15.08

Dimensions (continued)							
Part Number	Hole Size		Plate Thickness		Torque Value	Setting Tool	Stepped Drill
	in	mm	in	mm			
687-482-08	.437 / .445	11.10 / 11.30	.059-.157	1.50-3.99	70in-lbf	600-120	OFE07/16043
687-482-09	.437 / .445	11.10 / 11.30	>.157	>3.99			
687-482-10	.750 / .758	19.05 / 19.25	.078-.157	1.98-3.99	300in-lbf	600-123	OFE03/04051
687-482-11	.594 / .602	15.09 / 15.29	>.157	>3.99			OFE19/32042