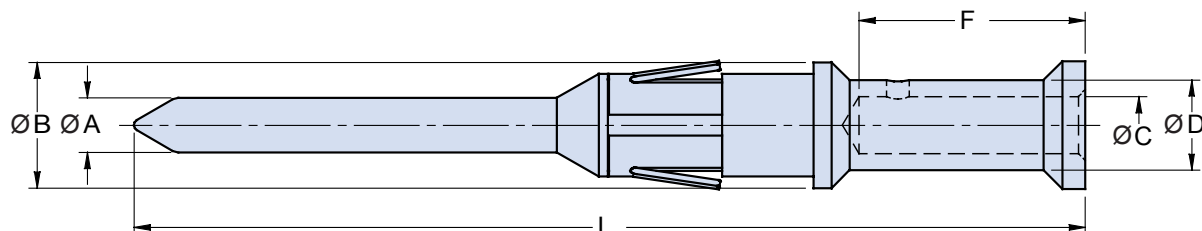


Crimped Pin Contacts



Part Number	Size	Wire gauge		ØA ±0,1	ØB +0 -0,1	ØC +0,1 -0	ØD ±0,1	F ±0,1	L ±0,2
		mm ²	AWG						
PL 570-20	20	0.15 ÷ 0.6	26 ÷ 20	1.00	2.4	1.3	2	4.5	32.0
PL 40557	16	1.5	16	1.57	3.7	1.7	2.6	7.9	30.9
PL 40557-12	16	0.5 ÷ 0.75	20	1.57	3.7	1.2	2.6	7.9	30.9
PL 40557-15	16	1	18	1.57	3.7	1.5	2.6	7.9	30.9
PL 40557-20	16	2	14	1.57	3.7	2	2.9	7.9	30.9
PL 40557-26	16	2.5 ÷ 3.5	12	1.57	3.7	2.5	3.8	7.9	30.9
PL 40561	12	2.5 ÷ 3.5	12	2.38	5.5	2.5	3.9	9.9	37.9
PL 40561-12	12	0.5 ÷ 0.75	20	2.38	5.5	1.2	2.6	9.9	37.9
PL 40561-20	12	1 ÷ 2	18 ÷ 14	2.38	5.5	2	3.9	9.9	37.9
PL 40561-30	12	4		2.38	5.5	3	4.8	9.9	37.9
PL 40792	8	6 ÷ 8	8	3.59	8.2	4.5	6.9	12.2	42
PL 40792-30	8	4		3.59	8.2	3	4.8	12.2	42
PL 40792-38	8	6		3.59	8.2	3.60	6.80	12.2	42
PL 40792-50	8	10		3.59	8.2	5.00	6.90	12.2	42

Size 8 Coaxial Contact

