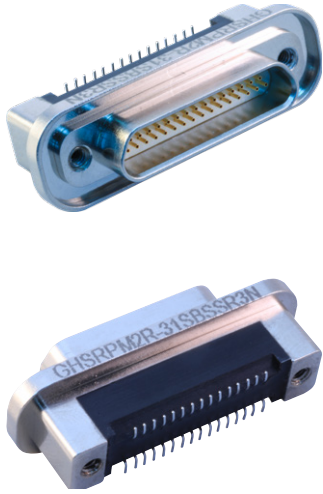


GHSRPM-BSS Straight surface-mount pin and socket rear panel-mount connectors (jackpost hardware)

GHSRPM-BSS



| How To Order | |
|--|---|
| Sample Part Number | GHSRPM 2 R -25 P BSS R3 N -513 |
| Series | GHSRPM = Glenair High-Speed Micro-D, Rear Panel Mount, Straight |
| Shell Finish | 2 = Nickel 5 = Gold |
| Insulator Material | R = PPS |
| Contact Layout | 9, 15, 21, 25, 31, 37, 51-2, 67 |
| Contact Type | P = Pin (Plug) S = Socket (Receptacle) |
| Termination Type | BSS = Board Straight Surface Mount |
| Hardware Type (see table below) | Rear Panel Jackposts with Threaded Inserts* R1 = .031" Panel R2 = .047" Panel R3 = .062" Panel R4 = .094" Panel R5 = .125" Panel R6 = .080" Panel |
| O-Ring | C = Conductive N = Non-Conductive (Nitrile) |
| Gold-Plated Terminal Mod Code | Connectors are solder-dipped in 60/40 Tin-Lead solder To delete solder dip and change to gold-plated terminals, add Mod Code -513 |

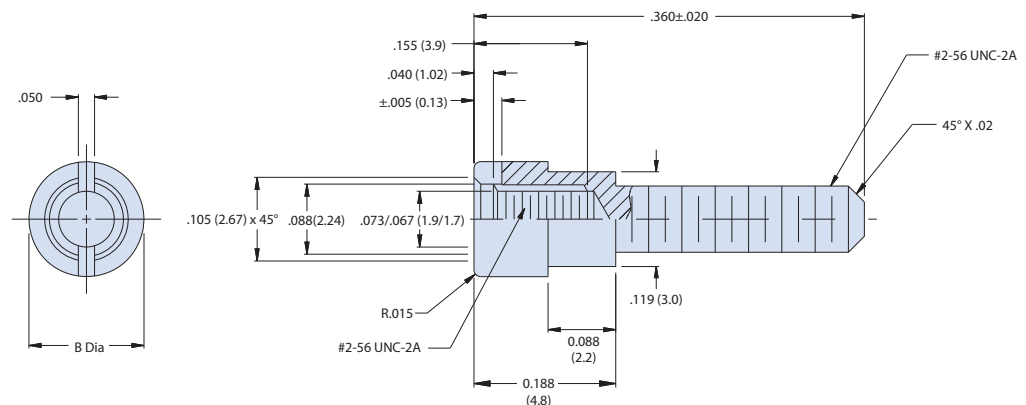
*Refer to Appendix A for recommended panel cutout.



| Rear Panel-Mount Mounting Hardware | | | | |
|------------------------------------|------------------|---------------|--------------------|--------------------|
| Code | Panel Thickness | | J ± .003 (0.08) | K ± .005 (0.13) |
| | Fractional Value | Decimal Value | | |
| R1 | 1/32 | .031 (0.8) | .024 (0.6) | .050 (1.3) |
| R2 | 3/64 | .047 (1.2) | .041 (1.0) | .050 (1.3) |
| R3 | 1/16 | .062 (1.6) | .055 (1.4) | .050 (1.3) |
| R4 | 3/32 | .094 (2.4) | .086 (2.2) | .050 (1.3) |
| R5 | 1/8 | .125 (3.2) | .118 (3.0) | .030 (0.8) |
| R6 | 2/25 | .080 (2.0) | .074 (1.9) | .050 (1.3) |

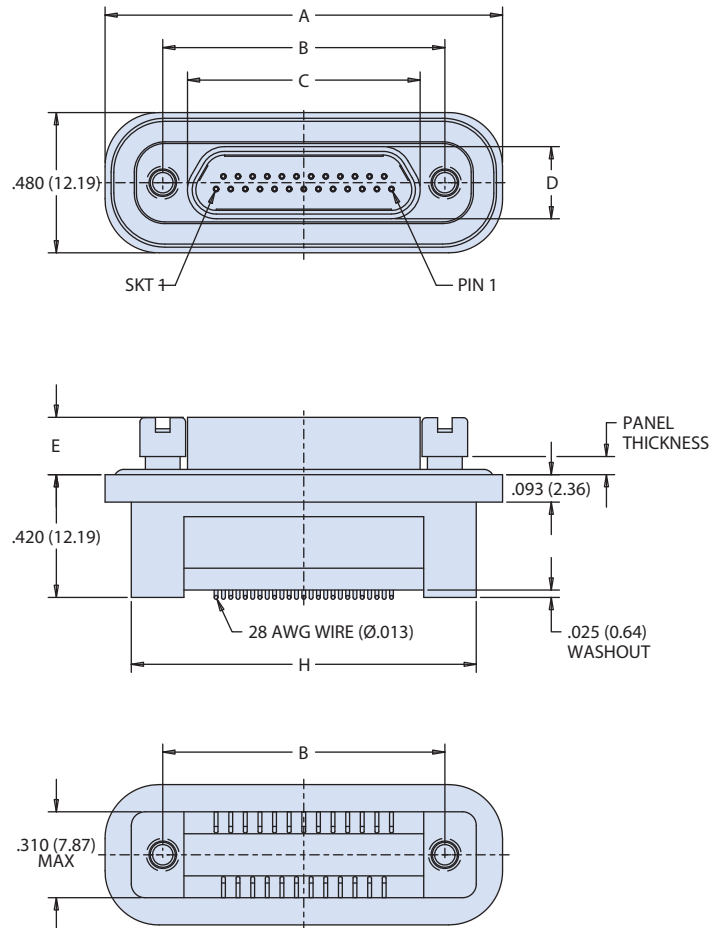
HARDWARE MATERIAL

Corrosion-Resistant Steel IAW
ASTM-A484 and ASTM-A582



GHSRPM-BSS Straight surface-mount pin and socket rear panel-mount connectors (jackpost hardware)

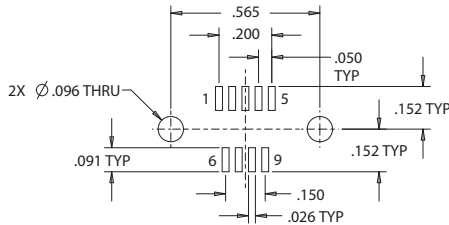
GHSRPM-BSS



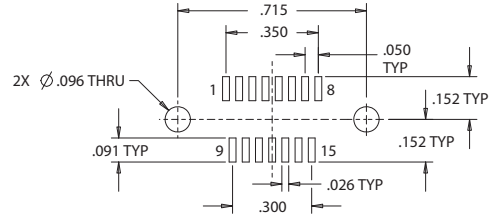
| Dimensions | | | | | | |
|------------|---------------|---------------|---------------|-------------|-------------|---------------|
| LAYOUT | A | B±.003 | C MAX | D MAX | E±.003 | H MAX |
| 9P | .960 (24.38) | .565 (14.35) | .333 (8.46) | .184 (4.67) | .183 (4.65) | .785 (19.94) |
| 9S | .960 (24.38) | .565 (14.35) | .400 (10.16) | .250 (6.35) | .195 (4.95) | .785 (19.94) |
| 15P | 1.110 (28.19) | .715 (18.16) | .483 (12.27) | .184 (4.67) | .183 (4.65) | .935 (23.75) |
| 15S | 1.110 (28.19) | .715 (18.16) | .551 (14.00) | .250 (6.35) | .195 (4.95) | .935 (23.75) |
| 21P | 1.260 (32.00) | .865 (21.97) | .633 (16.08) | .184 (4.67) | .183 (4.65) | 1.085 (27.56) |
| 21S | 1.260 (32.00) | .865 (21.97) | .701 (17.81) | .250 (6.35) | .195 (4.95) | 1.085 (27.56) |
| 25P | 1.360 (34.54) | .965 (24.51) | .733 (18.62) | .184 (4.67) | .183 (4.65) | 1.185 (30.10) |
| 25S | 1.360 (34.54) | .965 (24.51) | .801 (20.35) | .250 (6.35) | .195 (4.95) | 1.185 (30.10) |
| 31P | 1.510 (38.35) | 1.115 (28.32) | .883 (22.43) | .184 (4.67) | .183 (4.65) | 1.335 (33.91) |
| 31S | 1.510 (38.35) | 1.115 (28.32) | .951 (24.16) | .250 (6.35) | .195 (4.95) | 1.335 (33.91) |
| 37P | 1.660 (42.16) | 1.265 (32.13) | 1.033 (26.24) | .184 (4.67) | .183 (4.65) | 1.485 (37.72) |
| 37S | 1.660 (42.16) | 1.265 (32.13) | 1.101 (27.97) | .250 (6.35) | .195 (4.95) | 1.485 (37.72) |
| 51-2P | 2.010 (51.05) | 1.615 (41.02) | 1.384 (35.15) | .184 (4.67) | .183 (4.65) | 1.835 (46.61) |
| 51-2S | 2.010 (51.05) | 1.615 (41.02) | 1.450 (36.83) | .250 (6.35) | .195 (4.95) | 1.835 (46.61) |
| 67P | 2.410 (61.21) | 2.015 (51.18) | 1.784 (45.31) | .184 (4.67) | .183 (4.65) | 2.235 (56.77) |
| 67S | 2.410 (61.21) | 2.015 (51.18) | 1.850 (46.99) | .250 (6.35) | .195 (4.95) | 2.235 (56.77) |

GHSRPM-BSS Straight surface-mount pin and socket rear panel-mount connectors (jackpost hardware)

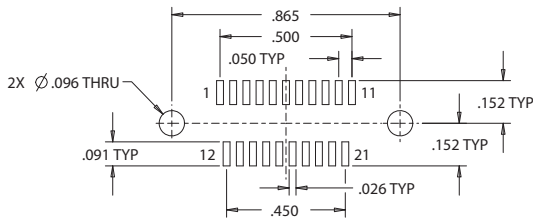
GHSRPM-BSS



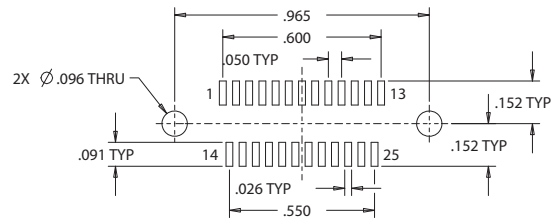
9 PIN



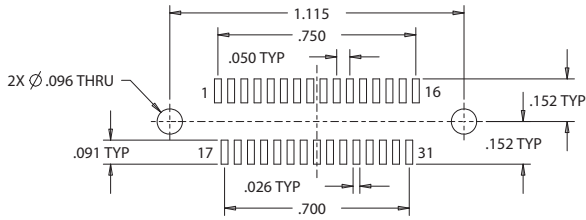
15 PIN



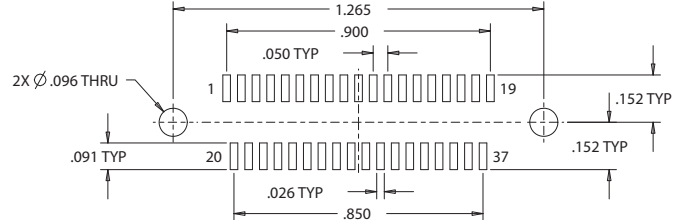
21 PIN



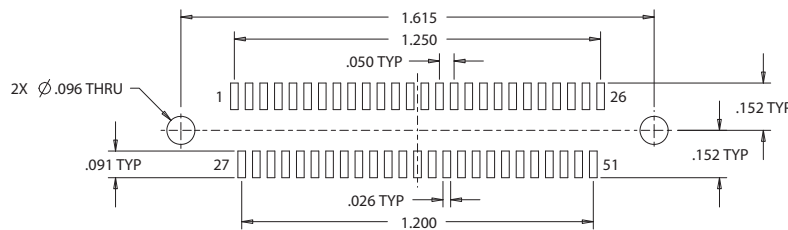
25 PIN



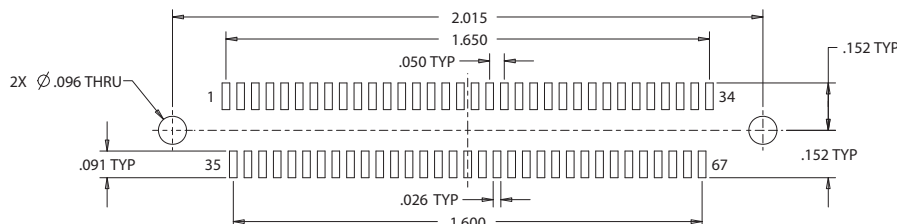
31 PIN



37 PIN



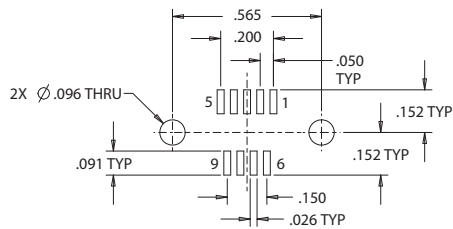
51-2 PIN



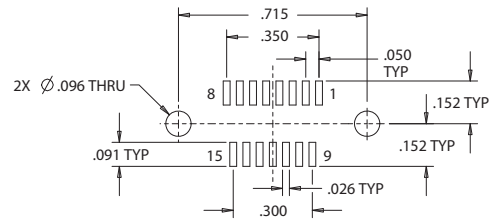
67 PIN

GHSRPM-BSS Straight surface-mount pin and socket rear panel-mount connectors (jackpost hardware)

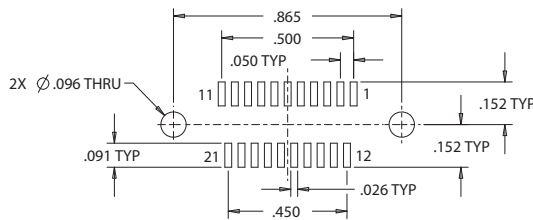
GHSRPM-BSS



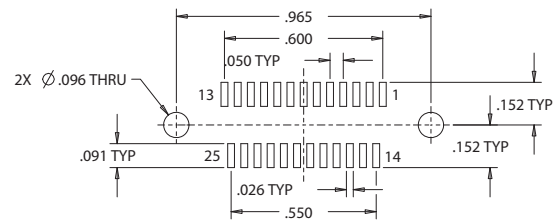
9 SOCKET



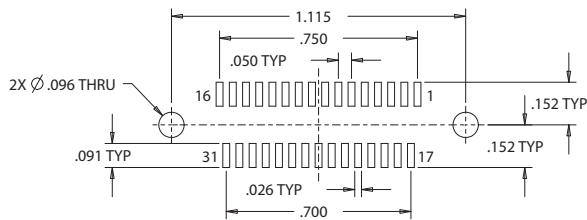
15 SOCKET



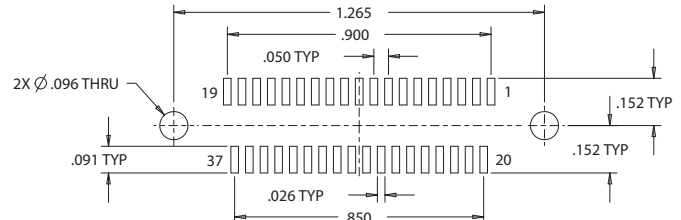
21 SOCKET



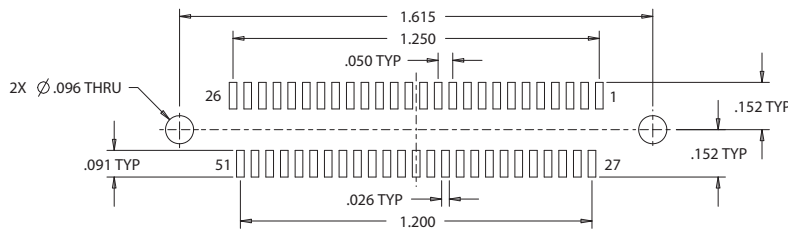
25 SOCKET



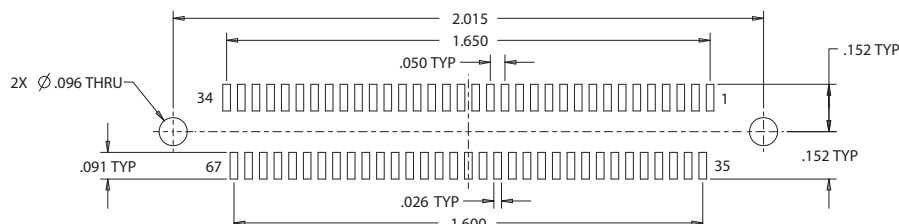
31 SOCKET



37 SOCKET



51-2 SOCKET



67 SOCKET