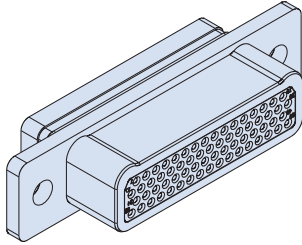
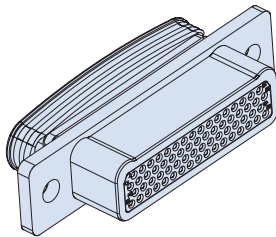


Cable Connectors with Crimp-and-Poke Contacts

791-003S, 791-004S Plug Connectors with Socket Contacts

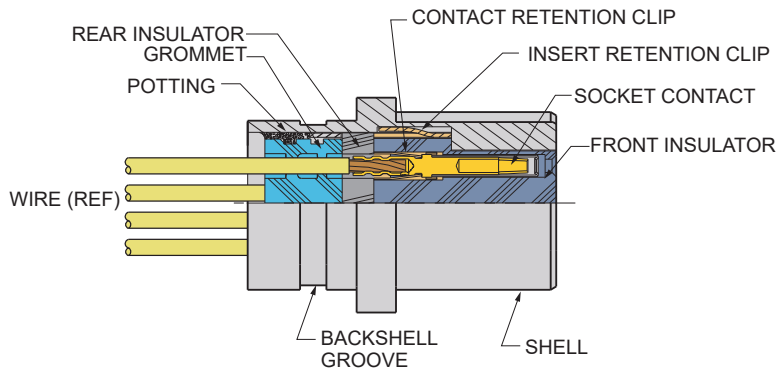


791-003S
With Backshell Groove



791-004S
With Integral Banding Platform

Harsh environment. Rugged construction. Ultriminiature. Series 791 connectors save size and weight compared to M24308 D Subminiature and other rack-and-panel connectors. Machined aluminum shell with polarizing lobes, snap-in crimp contacts, military grade materials, finishes and construction. Mating receptacles feature scoop-proof recessed pins for problem-free service.



RELIABLE DESIGN

- 100% scoop-proof
- Snap-in, rear release contacts
- EMI shell-to-shell continuity

VERSATILE

- Wide range of configurations
- Signal, power, RF, datalink
- Banding platform

HARSH ENVIRONMENT

- Humidity, water ingress
- Shock and vibration
- Temperature extremes
- Corrosion resistance
- High altitude

SIZE AND WEIGHT SAVING

- High density

How To Order

Sample Part Number	791-003S	H-66	M	P
Product	791-003S = Cable Plug, Socket Contacts, Backshell Groove 791-004S = Cable Plug, Socket Contacts, Integral Banding Platform			
Arrangement Number (Shell Size - Insert Arr.)	See Table 2			
Shell Finish	M = Electroless Nickel MT = Nickel-PTFE ZR = Black Zinc-Nickel			
Hardware Option (Table 1)	N = Thru-Hole (no hardware) S = Low Profile Screwlock, Hex Head T = Extended Screwlock, Slot Head L = Low Profile Jackscrew, Hex Head K = Extended Jackscrew, Slot Head P = Jackpost			

Specifications

- Operating temperature: -65 to +150°C
- Current and voltage ratings:

Contact Size	Amps, max.	DWV Vac rms
23	5	750
16	13	1800
12	23	1800
8	46	1800

- Shock: EIA-364-27 condition D
- Vibration: EIA-364-28 condition V, letter E
- See pages 8-10 for Series 79 Product Specifications (ref: 799-008)

Construction

- Shell: aluminum alloy
- Insulators: high grade rigid dielectric
- Contacts: copper alloy, 50 microinches gold over nickel plating
- Socket contact hood: stainless steel, passivated
- Wire grommet: fluorosilicone blend
- Contact retention clip, insert retention clip: beryllium copper
- Hardware: stainless steel, passivated

Wire Accommodation

Contact Size	Wire Range AWG
23	22 – 28
16	16 – 20
12	12 – 14
8	8

Cable Connectors with Crimp-and-Poke Contacts

791-003S, 791-004S Plug Connectors with Socket Contacts

Table 1 Hardware Option

Thread Sizes					
Hardware thread sizes vary by shell size. Shell sizes A, B, C, D, E, F, G, J, K have #4-40 UNC-2 thread, shell sizes H and L have #6-32 UNC-2 thread, shell size M has #8-32 UNC-2 thread.					
<p>N No Hardware Mounting flange has thru-holes.</p>	<p>P Jackpost Supplied loosely assembled with nut and split washer. Stainless steel.</p>	<p>L Low Profile Jackscrew Non-removable, hex head. Stainless steel.</p>	<p>K Extended Jackscrew Slot head, stainless steel, non-removable.</p>	<p>S Low Profile Screwlock Hex head, stainless steel, non-removable. Screwlocks allow the connector to be mated before the screws are fastened.</p>	<p>T Extended Screwlocks Slot head, stainless steel, non-removable. Screwlocks allow the connector to be mated before the screws are fastened.</p>

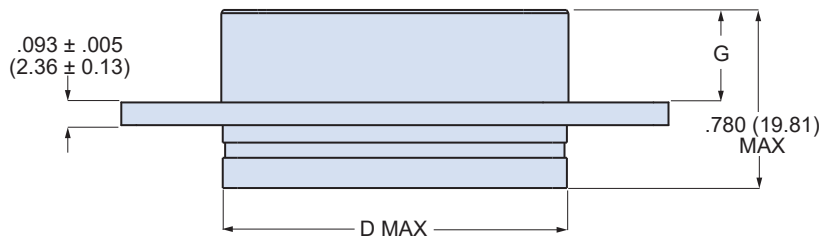
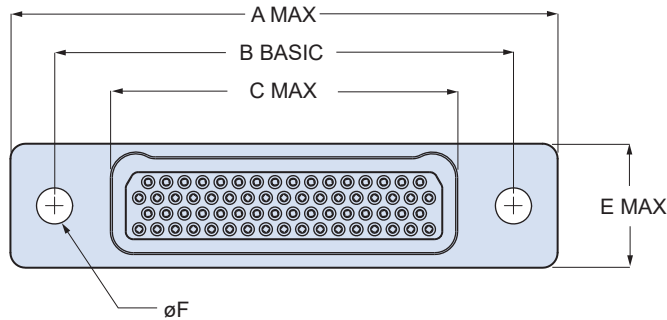
Table 2 Arrangement Number

Change the "P" to a "W" in any combo arrangement to delete power contacts. For example, arrangement **H-10P4** is supplied with a total of 10 contacts including (4) #12 power pins and (6) signal pins. Arrangement **H-10W4** is supplied with (6) signal pins and no power pins. Order coax contacts separately.

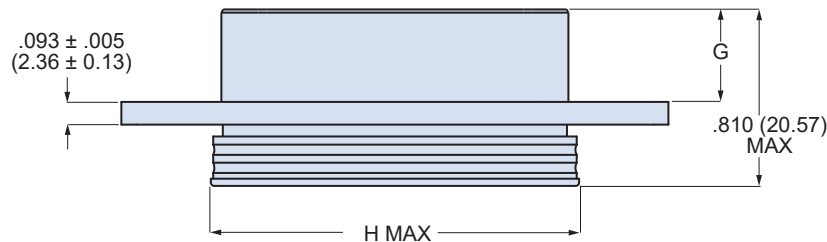
Arrangements with Size #23 Contacts	Arrangements with Size #16 Contacts	Arrangements with Size #12 Contacts
<p>A-5 5 #23</p> <p>B-9 9 #23</p> <p>C-13 13 #23</p>	<p>B-2P2 2 #16</p> <p>D-3P3 3 #16</p> <p>D-7P2 5 #23, 2 #16</p>	<p>G-13P2 11 #23, 2 #12</p> <p>G-3P3 3 #12</p> <p>G-21P1 20 #23, 1 #12</p>
<p>D-15 15 #23</p> <p>E-19 19 #23</p>	<p>E-11P2 9 #23, 2 #16</p> <p>E-7P3 4 #23, 3 #16</p> <p>F-14P3 11 #23, 3 #16</p>	<p>H-10P4 6 #23, 4 #12</p> <p>H-36P2 34 #23, 2 #12</p>
<p>F-23 23 #23</p> <p>G-33 33 #23</p>	<p>F-15P2 13 #23, 2 #16</p> <p>F-5P5 5 #16</p>	<p>H-5P5 5 #12</p>
<p>H-66 66 #23</p> <p>J-33 33 #23</p>	<p>H-29P7 22 #23, 7 #16</p> <p>H-54P2 52 #23, 2 #16</p>	<p>L-6P6 6 #12</p>
<p>K-43 43 #23</p>	<p>J-17P4 13 #23, 4 #16</p> <p>J-25P2 23 #23, 2 #16</p>	<p>Arrangements with Size #8 Contacts</p> <p>M-4P4 Supplied with 4 #8 Power Contacts</p> <p>M-4W4 Contacts ordered separately, dielectric insert</p> <p>M-4G4 contacts ordered separately, metal insert</p>
<p>L-78 78 #23</p>	<p>J-7P7 7 #16</p> <p>K-27P4 23 #23, 4 #16</p>	
<p>M-102 102 #23</p>	<p>K-35P2 33 #23, 2 #16</p> <p>K-9P9 9 #16</p>	
	<p>M-17P17 17 #16</p>	

Cable Connectors with Crimp-and-Poke Contacts

791-003S, 791-004S Plug Connectors with Socket Contacts



791-003S WITH BACKSHELL GROOVE



791-004S WITH INTEGRAL BANDING PLATFORM

Crimp Tools			
Contact Size	Crimper	Positioner	Die
23	809-015 (M22520/2-01)	809-005 (no mil spec #)	(not required)
16	809-136 (M22520/1-01)	809-137 (M22520/1-04)	(not required)
12	809-136 (M22520/1-01)	809-137 (M22520/1-04)	(not required)
8	859-025 (M22520/23-01)	859-046 (WA23-395L)	859-026 (M22520/23-02)

Note: see "Contacts and Tools" section for additional information

Insertion/Removal Tools	
Contact Size	Insertion/Removal Tool
23	809-088 (no mil spec #)
16	809-131 (M81969/14-03)
12	809-132 (M81969/14-04)
8	859-049 (M81969/14-12)

Band-Master® Shield Termination

790-004S plugs with integral banding platform are for use with Glenair **Band-Master®** micro-bands and installation tools.

791-003S and 791-004S Dimensions

Shell Size	A Max		B Basic		C Max		D Max		E Max		F Dia ±.005 (0.13)		G ±.003 (0.08)		H Max	
	In.	mm.	In.	mm.	In.	mm.	In.	mm.	In.	mm.	In.	mm.	In.	mm.	In.	mm.
A	1.035	26.29	.750	19.05	.415	1.054	.390	9.91	.415	10.54	.150	3.81	.383	9.73	.450	11.43
B	1.185	30.10	.900	22.86	.565	1.435	.540	13.72	.415	10.54	.150	3.81	.383	9.73	.600	15.24
C	1.335	33.91	1.050	26.67	.715	1.816	.690	17.53	.415	10.54	.150	3.81	.383	9.73	.750	19.05
D	1.410	35.81	1.125	28.58	.790	2.007	.790	20.07	.415	10.54	.150	3.81	.383	9.73	.850	21.59
E	1.560	39.62	1.275	32.39	.940	2.388	.940	23.88	.415	10.54	.150	3.81	.383	9.73	1.000	25.40
F	1.710	43.43	1.425	36.20	1.090	2.769	1.090	27.69	.415	10.54	.150	3.81	.383	9.73	1.150	29.21
G	1.673	42.49	1.388	35.25	1.052	2.672	1.090	27.69	.500	12.70	.150	3.81	.383	9.73	1.140	28.96
H	2.275	57.79	1.900	48.26	1.442	3.663	1.440	36.58	.520	13.21	.173	4.39	.383	9.73	1.535	38.99
J	2.085	52.96	1.800	45.72	1.465	3.721	1.450	36.83	.415	10.54	.150	3.81	.383	9.73	1.500	38.10
K	2.460	60.96	2.175	55.25	1.840	4.674	1.840	46.74	.415	10.54	.150	3.81	.383	9.73	1.900	48.26
L	2.511	63.78	2.136	54.26	1.678	4.262	1.675	42.55	.520	13.21	.173	4.39	.383	9.73	1.770	44.96
M	2.580	65.53	2.200	55.88	1.745	4.432	1.735	44.07	.635	16.13	.198	5.03	.423	10.74	1.835	46.60