

ITS 3102 Y

Front Panel Mount Square Flange Receptacle with PCB Contacts

No Accessory Threads

Elastomer Option
(See Table V)

Contact Type
31 - Solder

Connector Class
Y - PCB Tails (See Table I and II
for different Dimensions)

Contact Gender
P - Pin
S - Socket

Mod Code Option
(See Table III & IV)

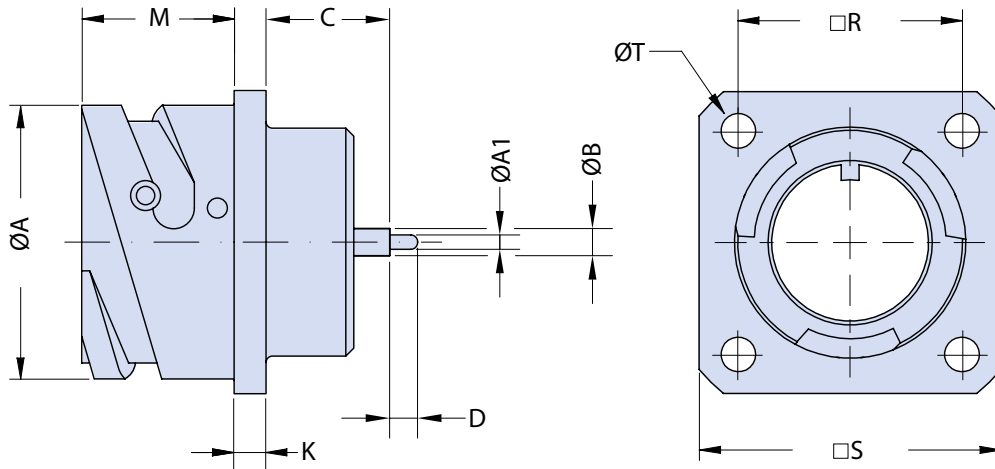
XX**ITS****31****02****Y****20-27****P****Y****XXX**

Reverse Bayonet Coupling
ITS - Aluminum Shell with
Stainless Steel Studs
ITB - Marine Bronze or
Stainless Steel Shell without
Stainless Steel Studs
For further details, see diagram
on page A-38

02 - Front Wall Mount

Shell Size and Insert
Arrangement
(See Section A)

Alternate Insert Rotation
(W, X, Y, Z)
Omit for Normal
(See Section A)



Application Notes

1. Front panel mount square flange receptacle with PCB contacts and no accessory threads. Contact factory for custom tail lengths.
2. Through mounting holes.
3. Standard materials configuration consists of aluminum alloy. For platings, see TABLE III finish options.
4. Standard contact material consists of copper alloy with silver plating or gold plating.

ITS 3102 Y
Front Panel Mount Square Flange Receptacle
with PCB Contacts
No Accessory Threads

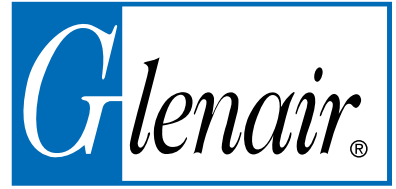


TABLE I: Y SIZE 16 AND 12 CONTACTS

Shell Size	Y#12				Y#16			
	A1	B	C ±0.4	D	A1	B	C ±0.4	D
10 SL	-	-	-	-	-	-	-	-
14 S	-	-	-	-	-	-	-	-
16 S	-	-	-	-	-	-	-	-
16	1.8	3.4	18.85	3.5	0.8	1.8	18.85	3.5
18	1.8	3.4	17.25	3.5	0.8	1.8	17.25	3.5
20	1.8	3.4	17.15	3.5	0.8	1.8	17.15	3.5
22	1.8	3.4	17.15	3.5	0.8	1.8	17.15	3.5
24	1.8	3.4	14.00	3.5	0.8	1.8	14.00	3.5
28	1.8	3.4	15.10	3.5	0.8	1.8	15.10	3.5
32	1.8	3.4	13.60	3.5	0.8	1.8	13.60	3.5
36	1.8	3.4	14.80	3.5	0.8	1.8	14.80	3.5
40	1.8	3.4	14.80	3.5	0.8	1.8	14.80	3.5

TABLE II: Y OTHER CONTACTS - SIZE 16 ONLY

Shell Size	DS1				YL5				YL7			
	A1	B	C ±0.4	D	A1	B	C ±0.4	D	A1	B	C ±0.4	D
10 SL	0.75	1.8	15.50	3.6	-	-	-	-	-	-	-	-
14 S	0.75	1.8	13.30	3.6	-	-	-	-	-	-	-	-
16 S	0.75	1.8	13.20	3.6	-	-	-	-	-	-	-	-
16	0.75	1.8	15.60	3.6	0.8	1.8	18.85	5.0	0.8	1.8	14.35	7.0
18	0.75	1.8	14.00	3.6	0.8	1.8	17.25	5.0	0.8	1.8	13.55	7.0
20	0.75	1.8	13.90	3.6	0.8	1.8	17.15	5.0	0.8	1.8	13.55	7.0
22	0.75	1.8	13.40	3.6	0.8	1.8	17.15	5.0	0.8	1.8	13.55	7.0
24	0.75	1.8	10.80	3.6	0.8	1.8	14.00	5.0	0.8	1.8	11.90	7.0
28	0.75	1.8	12.70	3.6	0.8	1.8	15.10	5.0	0.8	1.8	11.90	7.0
32	-	-	-	-	0.8	1.8	13.60	5.0	-	-	-	-
36	-	-	-	-	0.8	1.8	14.80	5.0	-	-	-	-
40	-	-	-	-	0.8	1.8	14.80	5.0	-	-	-	-

For missing dimensions refer to page B-3.

TABLE III: FINISH OPTIONS

STANDARD MATERIAL AND FINISH (*)		
Sym	Description	RoHS
	Omit for Aluminum/ Cadmium Olive Drab	
F6	Aluminum/ Black Electrodeposited Paint	✓
F7	Aluminum/ Black Zinc Nickel	✓
F11	Aluminum/ Electroless Nickel	✓
MB	Marine Bronze/ Unplated	✓
FK	Stainless Steel/ Passivate	✓

(*) For further finish options, please contact the factory.

TABLE IV: MODIFICATION CODES

CONTACT OPTIONS	
Sym	Description
B1	Connector with Gold Plated Contacts
Omit for standard version (Silver plated)	

TABLE V

ELASTOMER OPTIONS	
Sym	Description
	Omit for Polychloroprene Elastomer
FR	Fire Resistant Elastomer
S	Silicone Elastomer