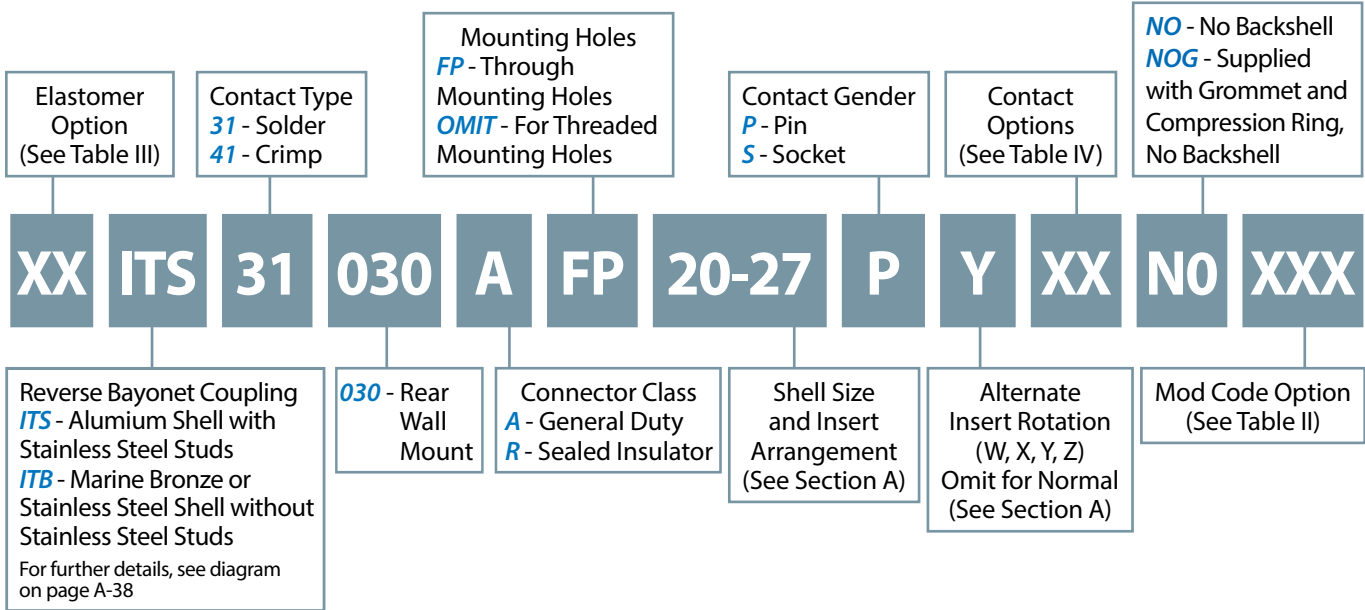
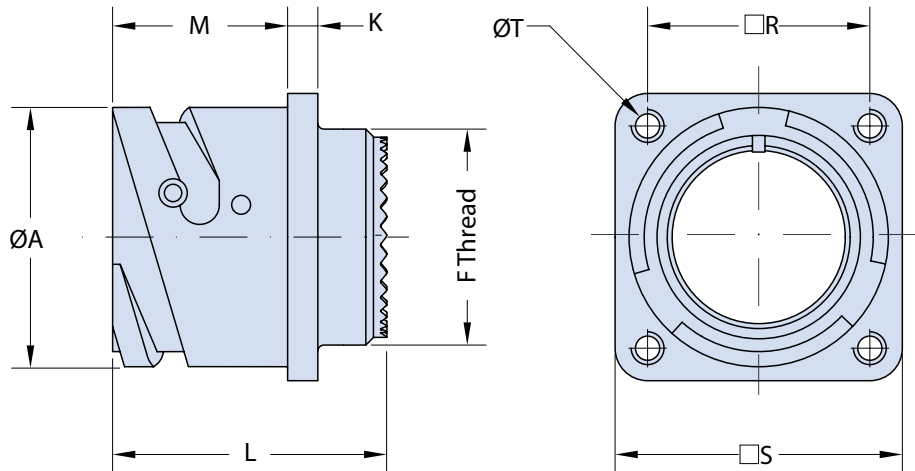


ITS 31030 A NO and ITS 41030 A NO Rear Panel Mount Square Flange Receptacle with Accessory Mounting Threads



B



Application Notes

1. Rear panel mount square flange receptacle with rear threads for attachment of various backend connector accessories. Threaded mounting holes standard. Optional non-threaded through mounting holes available.
2. Connector Class "A" (general duty); Connector Class "R" (environmental): sealed insulator only with solder contacts.
3. Standard materials configuration consists of aluminum alloy. For platings, see TABLE II finish options.
4. Standard contact material consists of copper alloy with silver plating or gold plating.
5. A broad range of other front and rear connector accessories are available.
See our website and/or contact the factory for complete information.

ITS 31030 A N0 and ITS 41030 A N0
Rear Panel Mount Square Flange Receptacle
with Accessory Mounting Threads



TABLE I: DIMENSIONS

Shell Size	ØA +0.2 -0.1	K ±0.2	L ±0.2	M +0.2 -0	R ±0.2	S ±0.2	T Thread	F Thread
10 SL	18.2	2.8	30.0	18.4	18.25	25.4	M4	0.6250 - 24UNEF
14 S	24.5	3.2	30.0	18.4	23.00	30.4	M4	0.7500 - 20UNEF
16 S	27.2	3.2	30.0	18.4	24.60	32.5	M4	0.8750 - 20UNEF
16	27.2	3.2	37.0	23.2	24.60	32.5	M4	0.8750 - 20UNEF
18	30.7	4.0	36.0	23.2	27.00	35.0	M4	1.0000 - 20UNEF
20	34.0	4.0	38.3	23.2	29.40	38.0	M4	1.1250 - 18UNEF
22	37.3	4.0	37.0	23.2	31.75	41.0	M4	1.2500 - 18UNEF
24	40.9	4.0	37.0	23.2	34.90	44.5	M4	1.3750 - 18UNEF
28	46.7	4.0	39.5	24.2	39.70	50.9	M5	1.6250 - 18UNEF
32	53.4	4.0	39.5	24.2	44.50	57.0	M5	1.8750 - 16UN
36	59.6	4.0	39.5	24.2	49.20	63.5	M5	2.0625 - 16UNS
40	65.5	4.0	39.5	24.2	55.55	69.9	M5	2.3125 - 16UNS

For through mounting holes refer to page B-3.

TABLE II: MODIFICATION CODES

STANDARD MATERIAL AND FINISH (*)		
Sym	Description	RoHS
	Omit for Aluminum/ Cadmium Olive Drab	
F6	Aluminum/ Black Electrodeposited Paint	✓
F7	Aluminum/ Black Zinc Nickel	✓
F11	Aluminum/ Electroless Nickel	✓
MB	Marine Bronze/ Unplated	✓
FK	Stainless Steel/ Passivate	✓

TABLE III

ELASTOMER OPTIONS	
Sym	Description
	Omit for Polychloroprene Elastomer
FR	Fire Resistant Elastomer
S	Silicone Elastomer

TABLE IV: MODIFICATION CODES

CONTACT OPTIONS	
Sym	Description
B0	Connector without Contacts**
B1	Connector with Gold Plated Contacts
Omit for standard version (Silver plated)	

(*) For further options, please contact the factory.

(**) Crimp Contacts Only