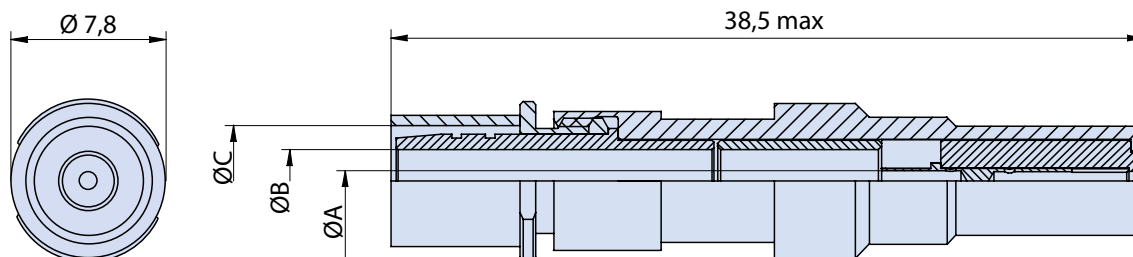
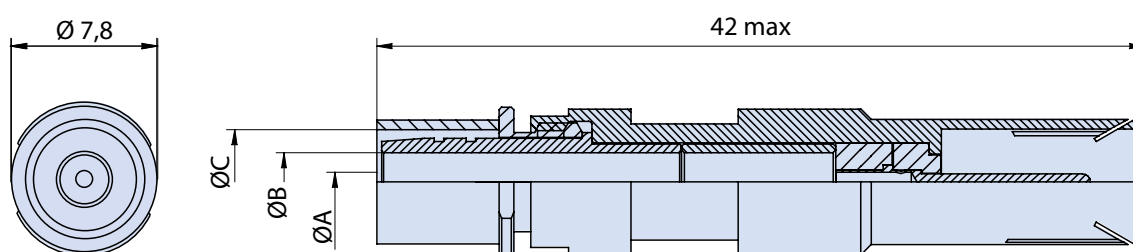


**COAXIAL PIN CONTACT**



**COAXIAL SOCKET CONTACT**



**TABLE I: COAXIAL PIN & SOCKET CONTACT PART NUMBERS, CABLE INFORMATION AND DIMENSIONS**

Pin P/N	Socket P/N	Used with Cable	Ø A	Ø B	Ø C
CC 70038	CC 70040	RG 58	1.05	3.15	5.23
CC 70046	CC 70042	RG 59	0.75	3,90	5,60
CC 70054	CC 70052	RG 179	0.55	1,70	3,10
CC 70056	CC 70058	RG 174 / RG 316	0.75	1,70	3,10
CC 70060	CC 70062	RG 142	1.05	3.15	5,60
CC 70064	CC 70066	RG 223	1.05	3.15	5,90

**COAXIAL INSERTION AND EXTRACTION TOOL - SIZE 8**



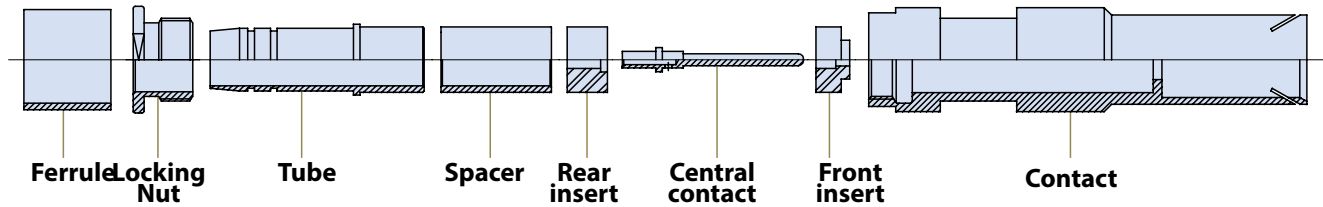
**P/N : M.118260/C**

Insertion and Extraction Tool for COAX Contacts Size 8

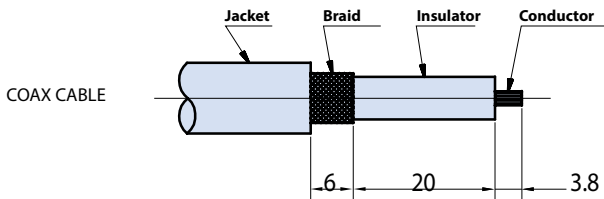
CC 700X  
ITS Bayonet Connector Assemblies  
Coaxial Contacts Assembly



COAXIAL CONTACTS ASSEMBLY



1 – Strip the cable according to the following dimensions



2 – Solder the central contact with the conductor of the coax cable after having pre-tinned the hole of the contact and the conductor, too

3 – Place the ferrule on the braid

4 – Place the locking nut on the tube and then this one on the insulator, then insert the tube under the braid

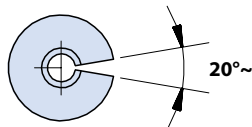
5 – Crimp the ferrule on the braid using the follow tools:

- Crimping tool: M22520 / 5-01
- Die assy for RG58: M22520 / 5-05 A
- Die assy for RG59: M22520 / 5-45 B
- Die assy for RG142: M22520 / 5-45 B
- Die assy for RG174: M22520 / 5-08 A
- Die assy for RG179: M22520 / 5-08 A
- Die assy for RG223: M22520 / 5-45 A

Note: the nut has to remain free to rotate

6 – Withdraw the spacer on the insulator till it stops against the tube

7 – Place the rear insert on the central contact by the cut on the side



8 – Place the front insert on the central contact and insert everything inside the contact lightly pressing the rear insert; then screw the nut and the contact together.

